



InLoox 11 for Outlook InLoox 11 for Windows

Client Setup Guide

Published: October 2022

You can find up-to-date information at <http://www.inloox.com>

The information contained in this document represents the current view of InLoox on the issues discussed as of the date of publication. Because InLoox must respond to changing market conditions, it should not be interpreted to be a commitment on the part of InLoox, and InLoox cannot guarantee the accuracy of any information presented after the date of publication.

This White Paper is for informational purposes only. INLOOX MAKES NO WARRANTIES, EXPRESS, IMPLIED OR STATUTORY, AS TO THE INFORMATION IN THIS DOCUMENT. Complying with all applicable copyright laws is the responsibility of the user. Without limiting the rights under copyright, no part of this document may be reproduced, stored in or introduced into a retrieval system, or transmitted in any form or by any means (electronic, mechanical, photocopying, recording, or otherwise), or for any purpose, without the express written permission of InLoox GmbH.

© 2022 InLoox, Inc. All rights reserved. IQ medialab and InLoox are either registered trademarks or trademarks of InLoox Inc. in Germany and/or other countries. The names of actual companies and products mentioned herein may be the trademarks of their respective owners.

General Information

The current version of InLoox is fundamentally different from predecessor generations of the product. Numerous innovations were realized together with customers and partners.

Supported database management systems with network usage are

- Microsoft SQL Server (all versions and editions from 2016).

The database schema of InLoox is ready for clustering usage.

InLoox 11 is internationalized and is on hand in different language versions. Region and language settings are supported for each user location. Thus, the foundations for a global usage are laid.

If you have worked with InLoox 10 before, please note that installing InLoox 11 upgrades the existing database schema automatically to version 11. This could lead to issues concerning your InLoox Licenses. You cannot undo this migration. Please backup your InLoox 10 database before upgrading to InLoox 11. Please do not hesitate to contact your InLoox contact.

Automatic Updates

InLoox 11 has an automatic update mechanism that always holds the latest version. With the following registry key you can deactivate the automatic updates for a specific client (true: deactivated). Über den folgenden Registry Key lässt sich das automatische Update für den jeweiligen Client deaktivieren (true: deaktiviert). Therefore see „automatic software updates“ in this whitepaper.

```
[ HKEY_LOCAL_MACHINE\ SOFTWARE\ InLoox\ InLoox PM Common\ Defaults ]  
"INLOOX_AUTO_UPDATE_DISABLED" = "true"
```

System Requirements

Server

The hard- and software requirements depend on the used database system. Please consult the product documentation of the respective manufacturer for valid requirements.

Microsoft offers a free database product:

- Microsoft SQL Server Express Edition

Client

For the installation Windows 10 or higher is required. You will also need Microsoft Office from Version 2013 or higher.

The system requirements are dependent to the used versions.

InLoox automatically installs Microsoft .NET 6 Desktop Runtime as system requirement.

Installation

InLoox for Windows

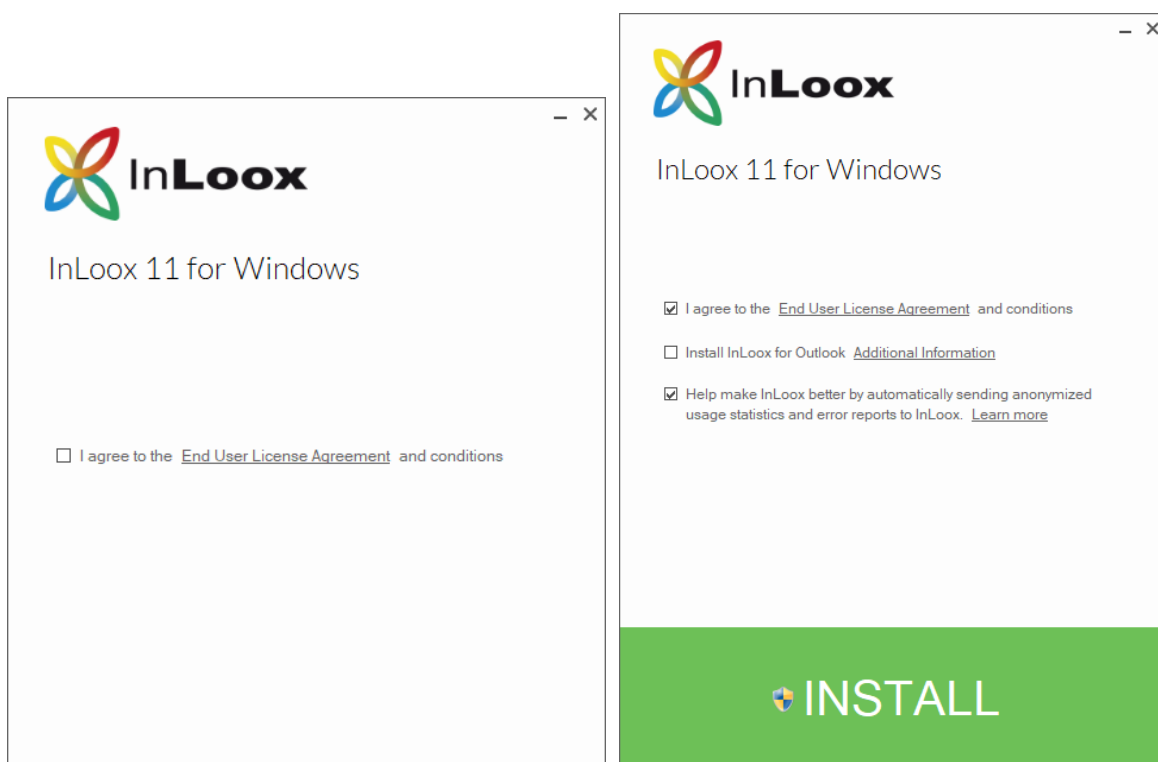
Important note:

From InLoox 11 we will provide you with two editions of InLoox. Both editions (Cloud and On-Prem) will be installed by the same client installer package.

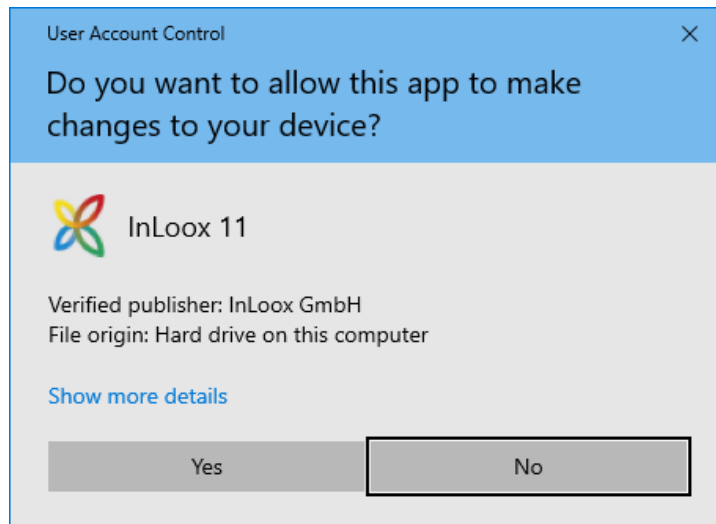
InLoox Cloud (project software as a service) includes maintenance and operation of your InLoox instance as well as the databases by InLoox Inc. (see 7.1).

InLoox On-Prem (project software hosted in your own network) provides the application. Maintenance and operation of your InLoox instance as well as the databases are in concern of your IT department (see 7.2).

1. Start **InLoox_for_Windows_FULL_11xx.exe**
2. The setup assistant will be started.
3. Check **I agree to the End User License Agreement and conditions.**
4. With the standard setup only the desktop client of InLoox will be installed. This is a standalone software product and is not connected to Outlook. Please choose **Install InLoox for Outlook** if you want to use InLoox as Outlook AddIn.
5. Click **Install**.



6. Depending on your operating system settings the dialog for **user account control** appears. Click on **Yes**.

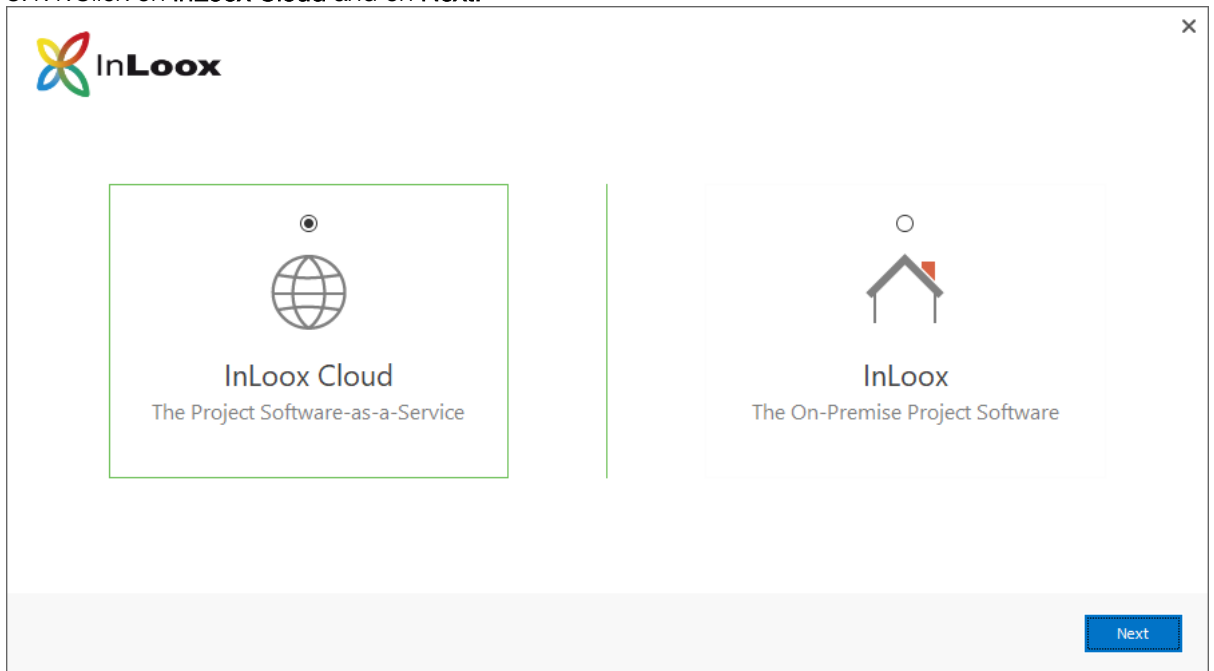


7. **InLoox** will now be installed. When the setup is finished click on **Launch**. InLoox for Windows or Outlook will now be started.

8. The setup assistant will now be opened.

8.1. InLoox Cloud

8.1.1. Click on InLoox Cloud and on Next.



8.1.2. InLoox now opens your standard web browser with the login screen. If you already have an account for InLoox Cloud please log in with your email address and password or via Microsoft 365.



Sign In

New Here? [Create Account](#)

Email

Password

[Forgot password?](#)



Sign In

OR

 Sign In with Microsoft

As an alternative you can create a new account for InLoox Cloud. Therefore click on **Create account**.

Enter your name, email address and password.



Create an Account

Enter your details to create your account

 [Create account with Microsoft](#)

OR

Name

John Johnson

Email

johnson@younameit.com

Password

.....

Use 8 or more characters with a mix of letters, numbers and symbols.

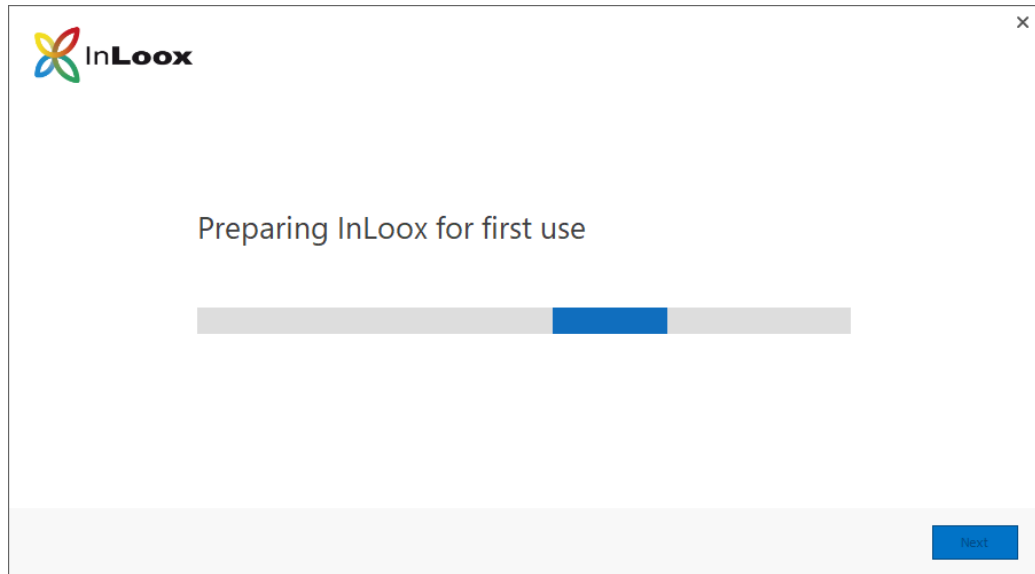
I agree with the [end-user license agreement](#) and the [order processing contract](#)

Create Account

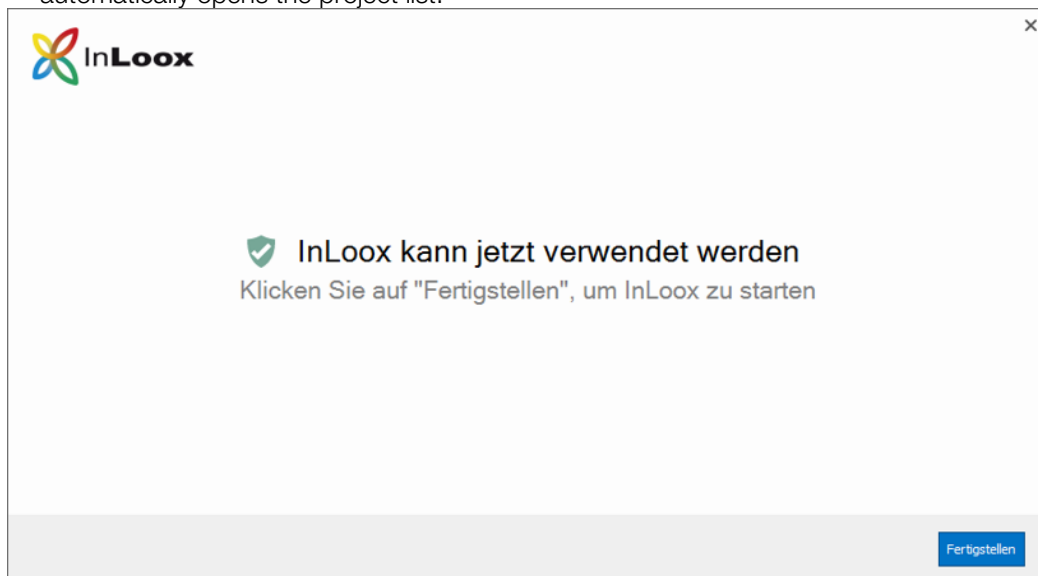
Cancel

Click on **create account**.

8.1.3. Your InLoox Cloud account will now be initialized.

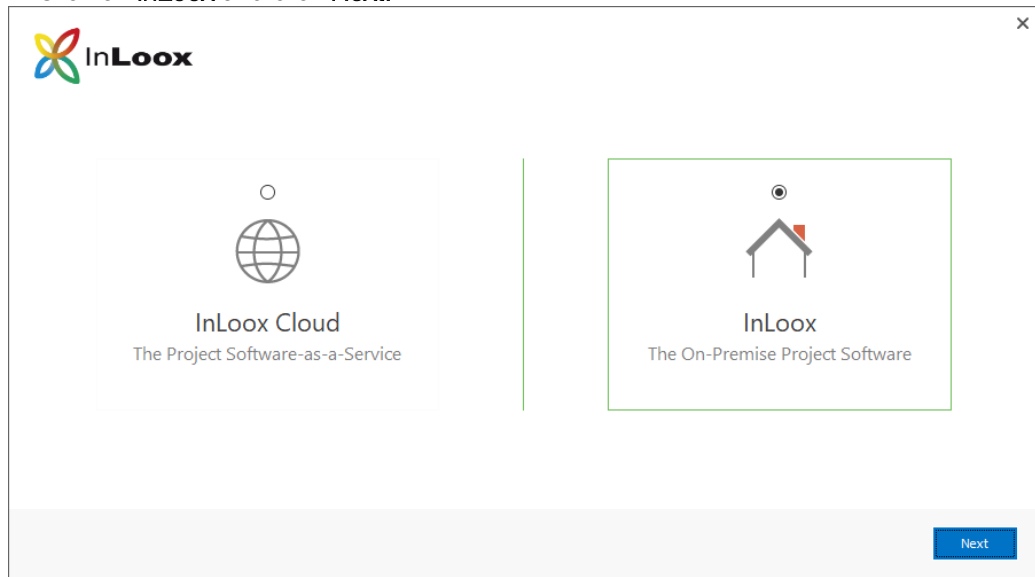


8.1.4. The setup assistant initialized your InLoox Cloud account. Click on **Finish** and InLoox automatically opens the project list.



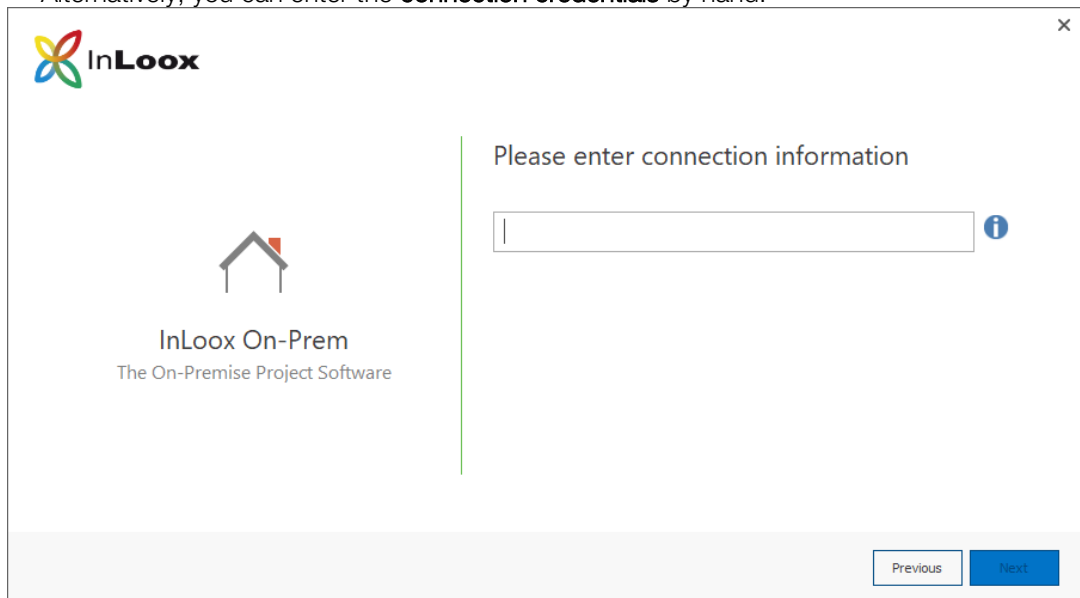
8.2. InLoox On-Prem

8.2.1. Click on **InLoox** and click **Next**.



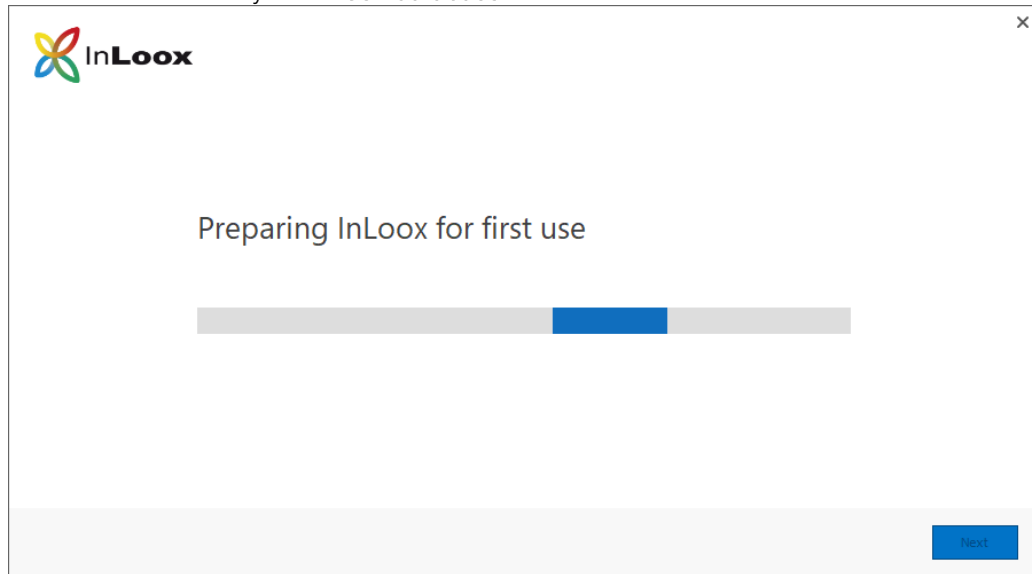
8.2.2. Click on  to search for your **InLooxConnection.json** file which has been created at the end of your server setup.

Alternatively, you can enter the **connection credentials** by hand.

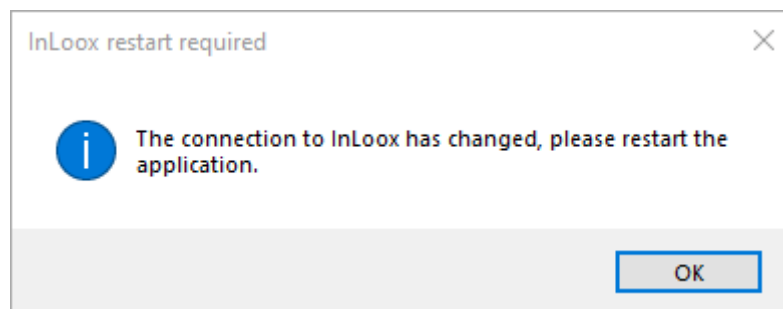


Click **Next**.

8.2.3. The connection to your **InLoox database** will now be established.



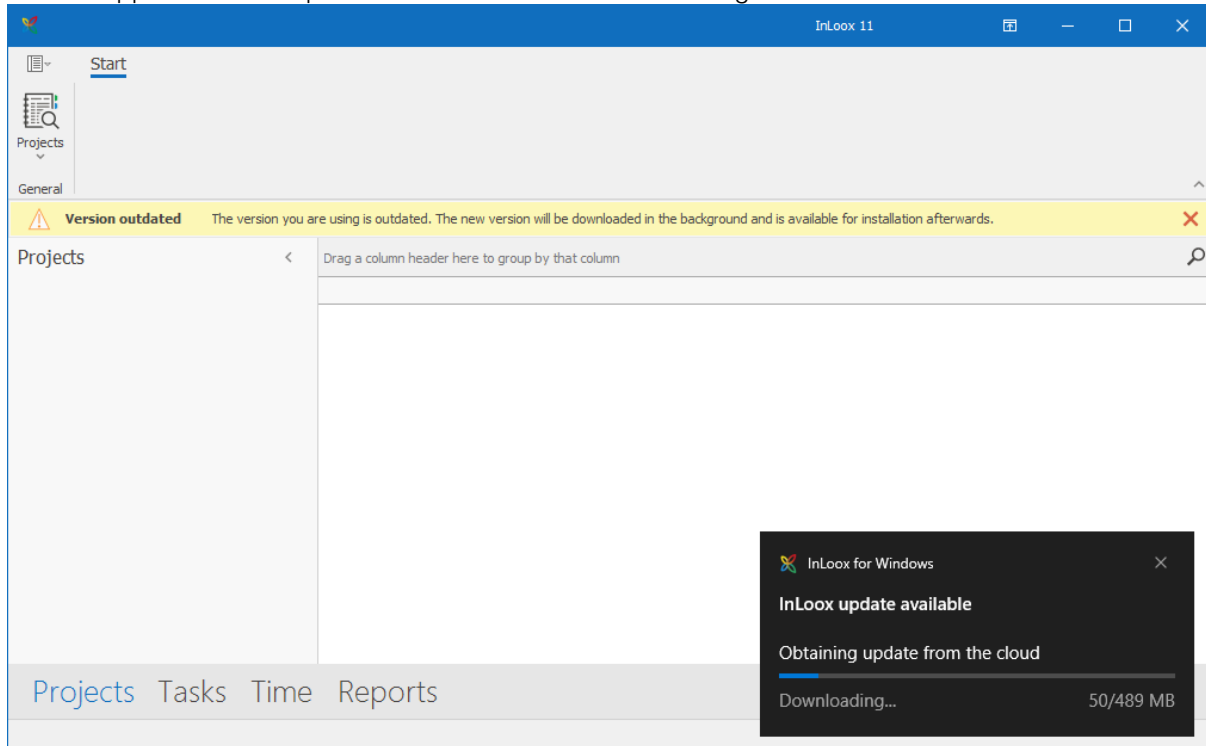
8.2.4. The setup assistant initialized your InLoox Cloud account.



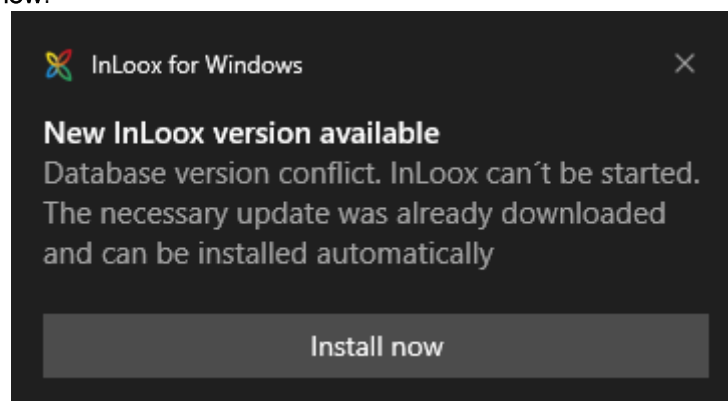
Automatic Updates

As described within **General Information** you can automatically update InLoox 11 every time a new release is online. With corresponding registry, you can manage the process. InLoox automatically checks on every startup if there is a newer release to the used one. We differentiate between a software update and a database update. In both cases you must download the new version and install it, before you can use InLoox again.

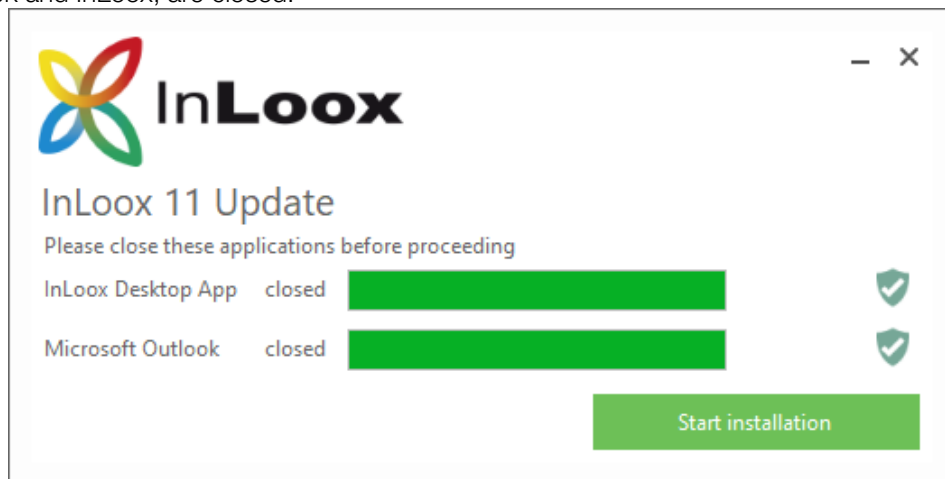
1. When a newer release of InLoox is online you will get the corresponding notification on the application. The update will be downloaded in the background.



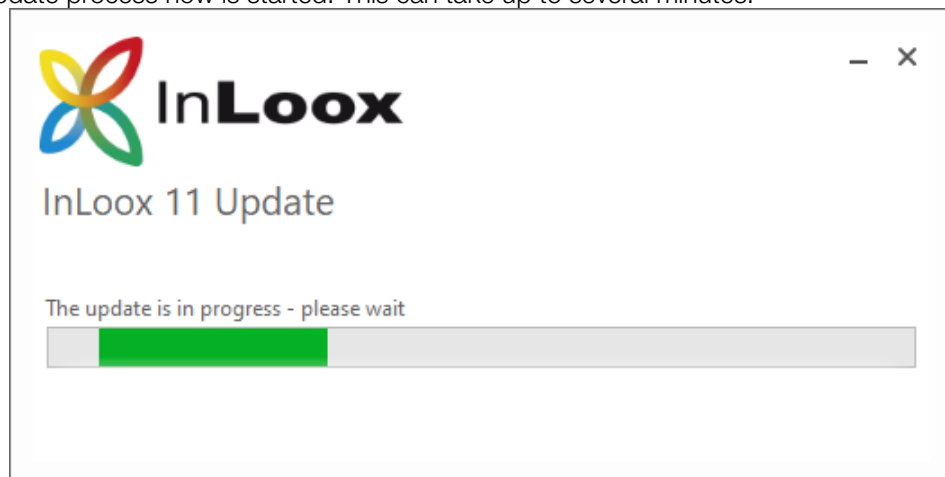
2. Click on **Install now**.



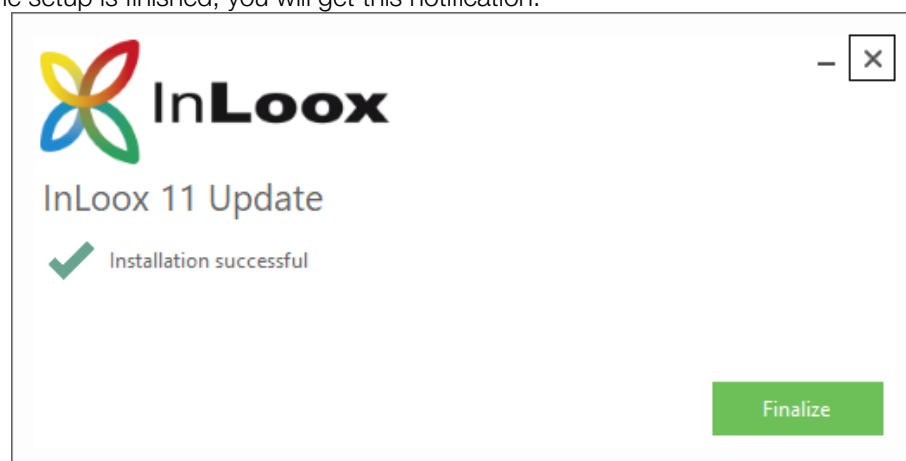
- To run the setup Outlook and InLoox must be closed. The setup automatically checks if both, Outlook and InLoox, are closed.



- Click on **Start Installation**.
- The update process now is started. This can take up to several minutes.



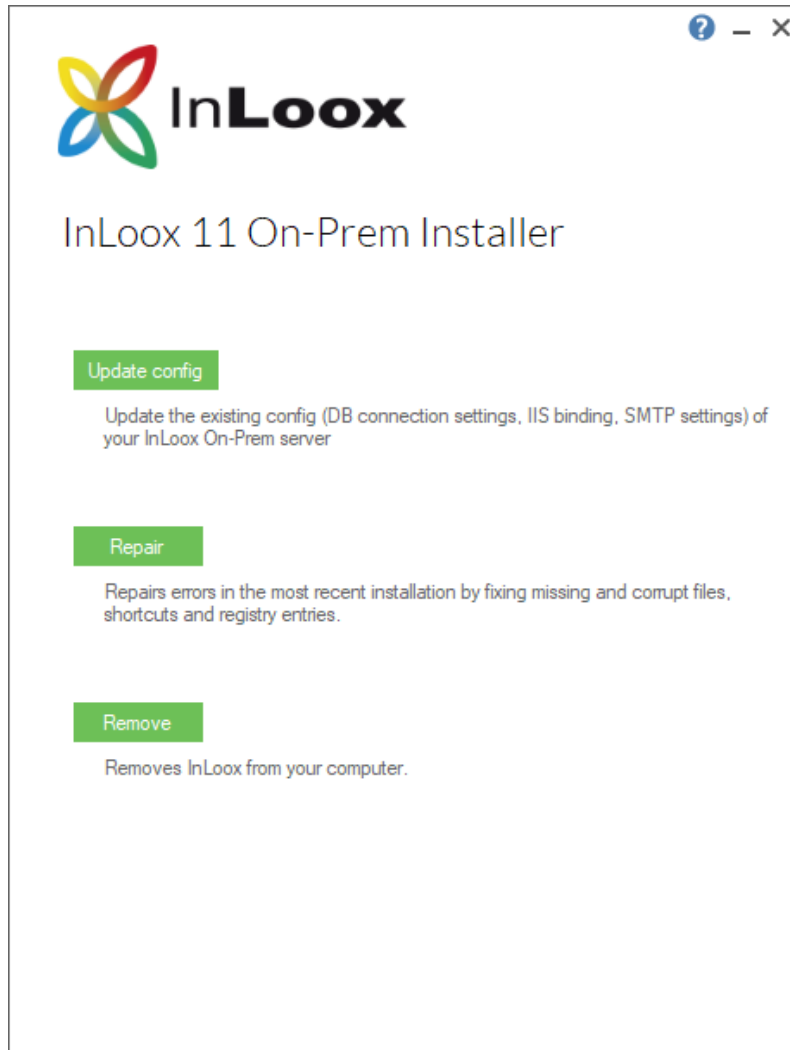
- When the setup is finished, you will get this notification.



- Click on **Finalize**. Now you can again use InLoox.

Configuration Mode

After the completed installation you can still change the configuration of InLoox. Therefore, start the corresponding installation process as administrator from the file **InLoox_OnPrem_Server_11xx.exe**. Alternatively, you can change the configuration from the system settings.



Click **Update config**.

Change the needed information from the installer routine and finish the installation process again. All information previously entered (except the certificate) is saved, so you only need to change the required data.

Important note:

After updating the configuration all services are rebooted. The app will not respond for some time.