



# **Project management – Web based access**

InLoox Web App 6.x Installation Guide

An InLoox Whitepaper

Published: November 2010

You can find up-to-date information at <http://www.inloox.com>

The information contained in this document represents the current view of InLoox on the issues discussed as of the date of publication. Because InLoox must respond to changing market conditions, it should not be interpreted to be a commitment on the part of InLoox, and InLoox cannot guarantee the accuracy of any information presented after the date of publication.

This White Paper is for informational purposes only. INLOOX MAKES NO WARRANTIES, EXPRESS, IMPLIED OR STATUTORY, AS TO THE INFORMATION IN THIS DOCUMENT.

Complying with all applicable copyright laws is the responsibility of the user. Without limiting the rights under copyright, no part of this document may be reproduced, stored in or introduced into a retrieval system, or transmitted in any form or by any means (electronic, mechanical, photocopying, recording, or otherwise), or for any purpose, without the express written permission of InLoox GmbH.

© 2010 InLoox GmbH. All rights reserved.

IQ medialab and InLoox are either registered trademarks or trademarks of InLoox GmbH in Germany and/or other countries.

The names of actual companies and products mentioned herein may be the trademarks of their respective owners.

## Contents

General information.....	1
System Requirements.....	1
Installation .....	2
InLoox Web App .....	2
Troubleshooting.....	8
General errors.....	8
Errors related to Microsoft SQL server .....	8

## General information

The current available version of InLoox is fundamentally different from predecessor generations of the product. The Enterprise Edition now offers a web server program which enables the user to access and modify InLoox data via a web browser. This document describes the system requirements and installation steps.

Supported database management systems with network usage are:

- Microsoft SQL Server (all versions and editions of SQL server 2005 and 2008)
- Oracle (versions 11g, 10g, 9i, 8i, 8.0, „Express“ and “Enterprise” including „x64“- editions)
- MySQL (versions 5.0)

The database schema of *InLoox Web App/InLoox Enterprise Edition* is ready for offline and clustering usage.

InLoox Web App is internationalized and is on hand in different language versions. Region and language settings are supported for each user. Thus the foundations for a global usage are laid.

## System Requirements

### Server

Internet Information Server version 6.0 or higher

Net Framework 3.5

Microsoft Exchange Server ® (2010 or 2007 SP1)

The hard- and software requirements depend on the used database system. Please consult the product documentation of the appropriate manufacturer for valid requirements.

All manufacturers, supported by InLoox, offer a free database product:

- Microsoft SQL Server express edition
- Oracle Express Edition
- MySQL Community Edition

### Web browser

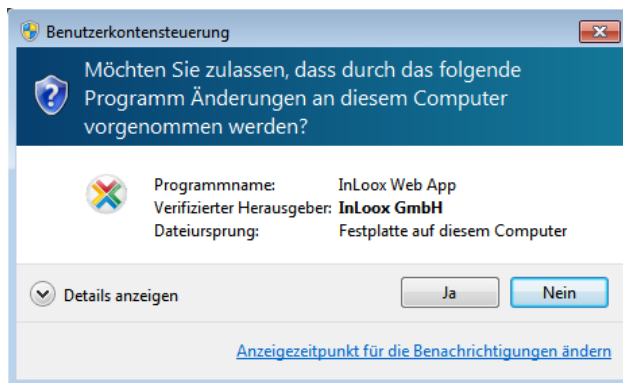
- Firefox Version 3.5 or higher
- Internet Explorer Version 7 or higher
- Safari 4 or higher
- Opera 10 or higher

# Installation

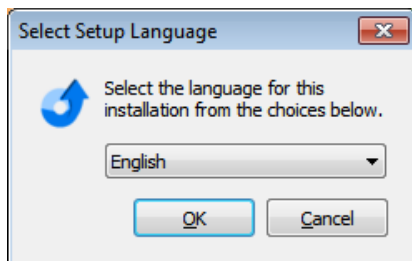
## InLoox Web App

*Important note: **Please install the database server in advance.** See chapter „System requirements/Server“. All manufacturers, supported by InLoox, offer a free database product, which is ready for use within a few minutes.*

1. Run **InLoox\_WebApp.exe**
2. Under systems with user access control (e.g. Windows Server 2008 R2) the dialog of the „*User Account Control*“ appears. Click on **YES**



3. The installation assistant is started  
Select the desired installation language (e.g. "English")

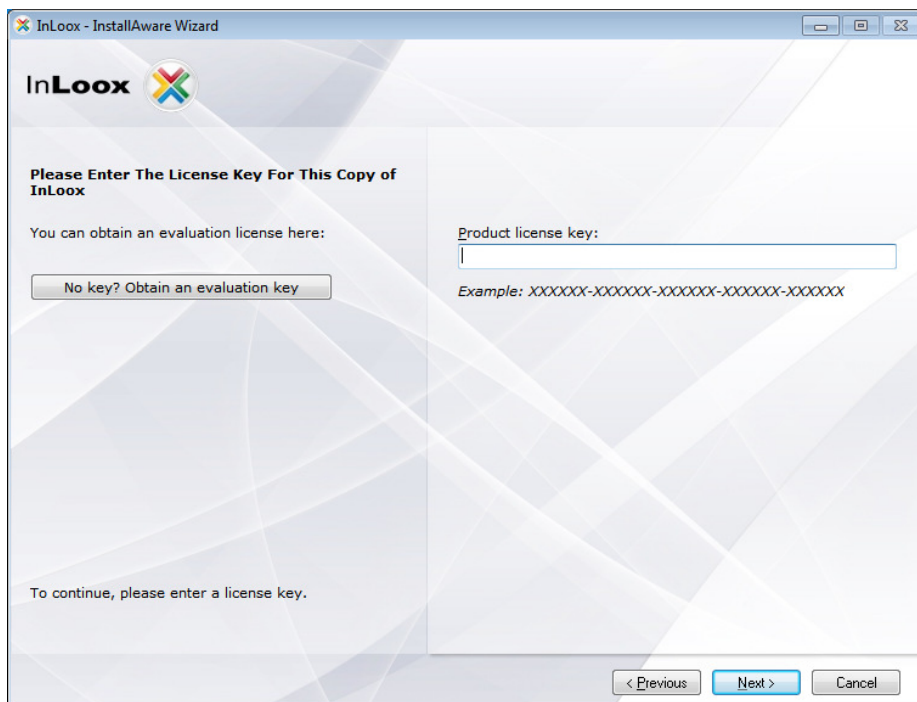


4. The system requirements are examined and if necessary components are installed. Click on “Next”. The installation can take several minutes depending on extent.

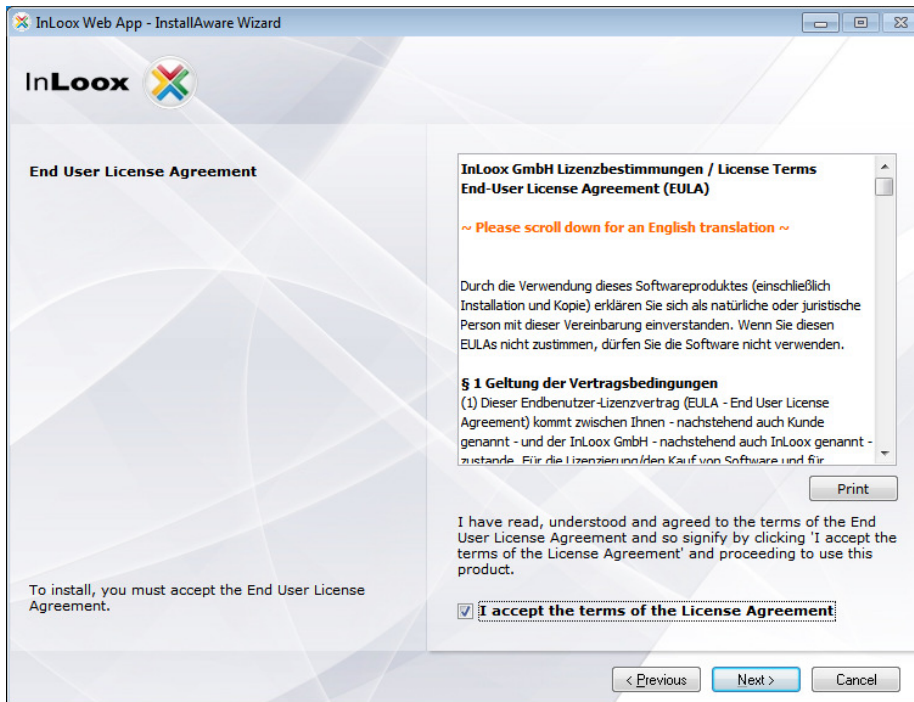
5. Click on „Next“



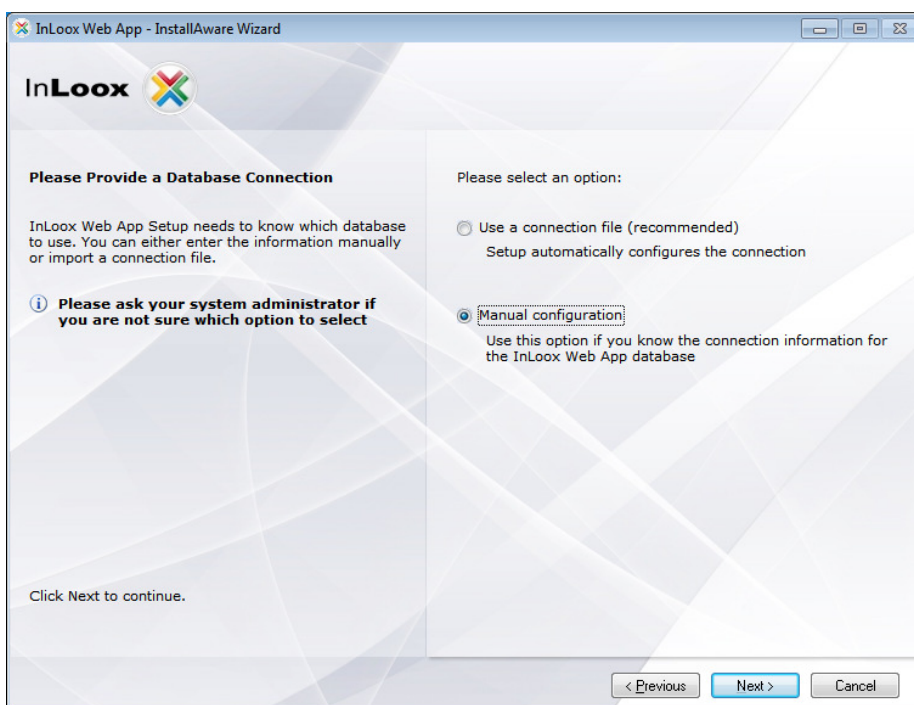
6. Enter your InLoox license key and click on “Next”



7. Click on “*I accept the terms of the License Agreement*”, then on “*Next*”



8. Select “*Manual configuration*” if you do not want to use a connection file\* and click on “*Next*”



\* here you can use the connection.info file of InLoox, if you use Microsoft SQL Server and specified SQL authentication (Username / Password) for the InLoox installation. The other database manufacturers only offer SQL authentication which is always ok.

9. Select the database system which should be used, e.g. „Microsoft SQL server“

You can scan for available „Microsoft SQL Server“ on the network. Select a server from the list of available Microsoft SQL Servers. If you use another type of server, please fill in the server name manually.

Please specify the database name of the present InLoox database.

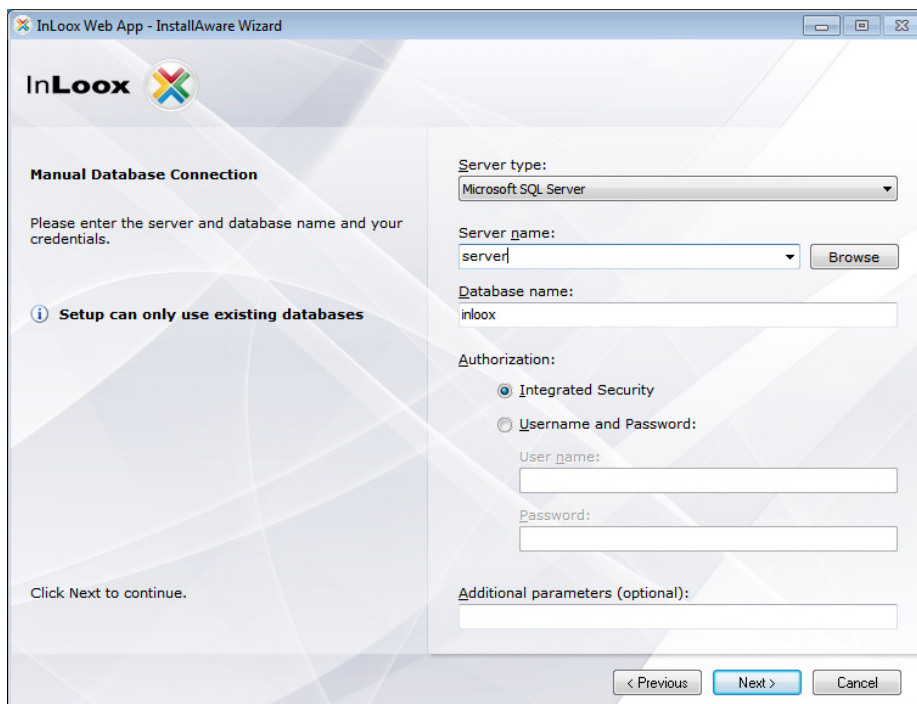
The authorization mode „Integrated Security“ is applicable for „Microsoft SQL Server“. Other database manufacturers only offer authorization with user name and password as default.

We recommend the usage of username and password also for Microsoft SQL Server. For the „Integrated Security“ you would have to give the IIS process permissions to log on the database.

Please check the chapter „Troubleshooting“, if problems occur.

Additional parameters are needed, in order to set different port numbers or timeout settings. A different setting is normally not necessary.

Click on „Next“ after setting the values.



Important! When using „Integrated Security“ you have to set the permissions for all users.

Please consult the whitepaper „InLoox 6.x configuration guide for Microsoft SQL Server“ for detailed information.

**Examples for the server name:**

Microsoft SQL Server:

The server name e.g. for a Microsoft SQL Express installation would be “<server>\SQLEXPRESS” – SQLEXPRESS is the default instance name for this installation.

On a full version of Microsoft SQL Server it would be “<server>” since the default instance name is empty.

(Replace “<server>” by the name or IP of the hosting server)

MySQL:

On MySQL you just specify the name or IP of the hosting server. (“<server>”)

Oracle:

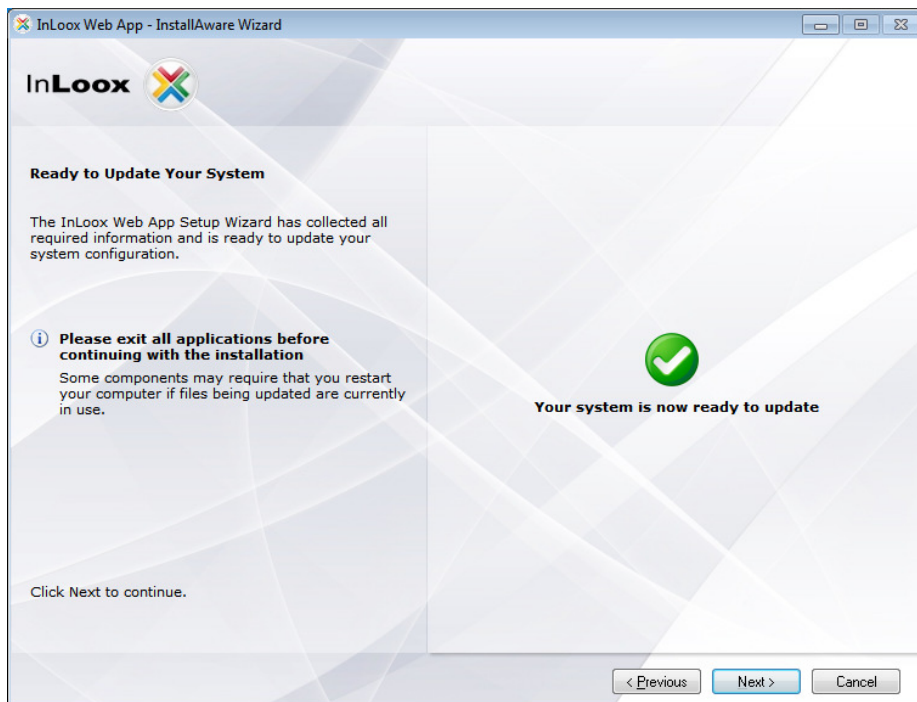
For Oracle specify the name of the hosting server.

Important! Fill in the oracle instance name (SID) for “Database name”.

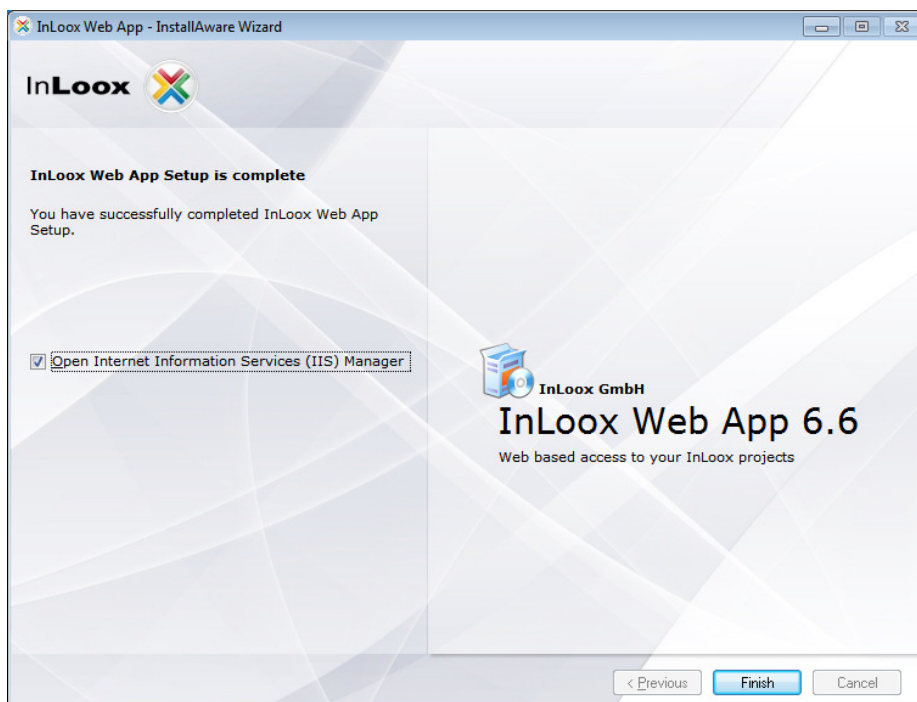
10. Choose an existing Internet Information Server website (IIS-Website) on the IIS server or create a new website. If creating a new website, you can enter an alternative website port binding (http and https).

Enter a virtual folder name where the InLoox Web App Server should be reachable (http://server/iwa) and click on “Next”

## 11. Click on “Next”



## 12. Click on „Finish“



## Troubleshooting

### General errors

If you cannot create a connection to a SQL Server during installation please verify that a SQL Server is installed. Ask your system administrator. If you have access to your server, proceed as follows:

1. Open: **Start >> Control Panel >> Programs and Features** on the server
2. There has to be a SQL server entry in the list of the installed software. See chapter „General Information“ for a list of supported servers.
3. Open: **Start >> All programs >> Administration >> Services** on the server
4. There has to be a SQL server entry in the service list. The service must be *started*.

Ensure that the port of the database servers is not *blocked*. Examine the firewall settings on the server, the clients as well as on the network hardware. The standard ports of the databases are:

- MS SQL Server: Port 1433 – for the SQL Bowser service open the port 1434 UDP
- Oracle Application Server/Oracle Database: Port 1521
- MySQL Server: Port 3306

### Errors related to Microsoft SQL server

Register the appropriate users into the Active directory user group for SQL users.

1. Open: **Start >> All Programs >> Administration >> Active directory user and - computers** on the server
2. Edit the appropriate user (e.g. „John Doe“) or the appropriate user group (e.g. „Coworker selling “)
3. The dialog „*Properties of...* “ appears. Change to tab „*member of* “
4. Click on **Add..** The dialog „*Select Group*“ appears
5. Enter into **object names** the input field

**SQLServer2005MSSQLUser** (for SQL server 2005) and/or **SQLServer2008MSSQLUser** (for SQL server 2008). Click on **Check name**. The name should be resolved as follows:

SQLServer2005MSSQLUser\$SERVERNAME\$MSSQLSERVER (for SQL server 2005)  
SQLServer2008MSSQLUser\$SERVERNAME\$MSSQLSERVER (for SQL server 2008)

The part **SERVERNAME** is in this context the name of the SQL server and/or the primary domain controller (PDC).

6. Click on „OK“ in the opened dialog

You can also configure the access permissions via the SQL Server Management Studio for SQL 2005 and 2008. InLoox supports Windows- and SQL-account logon. Please consider the appropriate guide for configuring the authorizations by Microsoft:

<http://support.microsoft.com/?scid=kb%3Ben-us%3B889615&x=5&y=9>