



# **Project management – integrated into Outlook**

InLoox 6.x Help for the configuration for MySQL-Server

An InLoox Whitepaper

Published: January 2011

Copyright: © InLoox GmbH 2011

You find up-to-date information at <http://www.inloox.com>

The information contained in this document represents the current view of InLoox on the issues discussed as of the date of publication. Because InLoox must respond to changing market conditions, it should not be interpreted to be a commitment on the part of InLoox, and InLoox cannot guarantee the accuracy of any information presented after the date of publication.

This White Paper is for informational purposes only. INLOOX MAKES NO WARRANTIES, EXPRESS, IMPLIED OR STATUTORY, AS TO THE INFORMATION IN THIS DOCUMENT.

Complying with all applicable copyright laws is the responsibility of the user. Without limiting the rights under copyright, no part of this document may be reproduced, stored in or introduced into a retrieval system, or transmitted in any form or by any means (electronic, mechanical, photocopying, recording, or otherwise), or for any purpose, without the express written permission of InLoox GmbH.

© 2010 InLoox GmbH. All rights reserved.

IQ medialab and InLoox are either registered trademarks or trademarks of InLoox GmbH in Germany and/or other countries.

The names of actual companies and products mentioned herein may be the trademarks of their respective owners.

## Content

General Information

General Information.....	1
Installation of MySQL-Server.....	1
Purchase of MySQL-Server .....	1
Alternative 1: MySQL Installation .....	2
Create a user to setup and connect to the database .....	8
Alternative 2: Installation of the MySQL Server with XAMPP.....	9
Create a user to setup and connect to the database with phpMyAdmin.....	13
Opening a port .....	16

---

## General Information

This document describes the steps to a successful launch and configuration of a MySQL-Server for InLoox. Exemplary used as platform is a Windows Server 2003. This instruction of configuration is very similar on other platforms, supported by MySQL. For systems supported by MySQL. Please consult the correspondent papers of the producer.

## Installation of MySQL-Server

### Purchase of MySQL-Server

There are different possibilities to purchase a MySQL Server

From the official MySQL site

<http://downloads.mysql.com/archives.php?p=mysql-5.1&v=5.1.54>

Or as a part of the XAMPP project

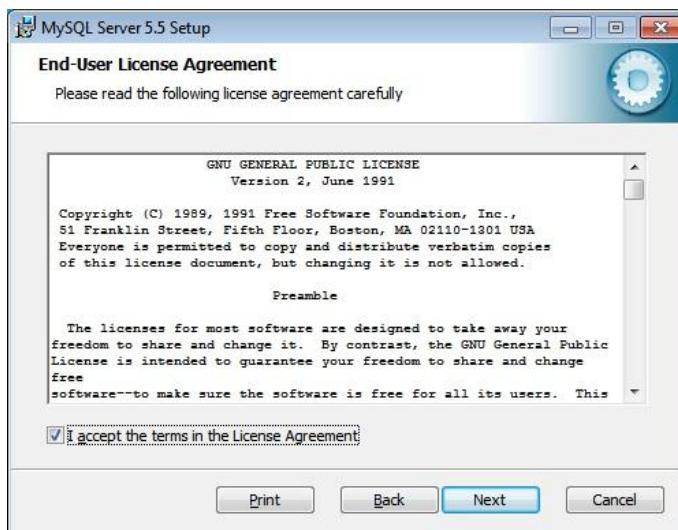
<http://www.apachefriends.org/de/xampp.html>

## Alternative 1: MySQL Installation

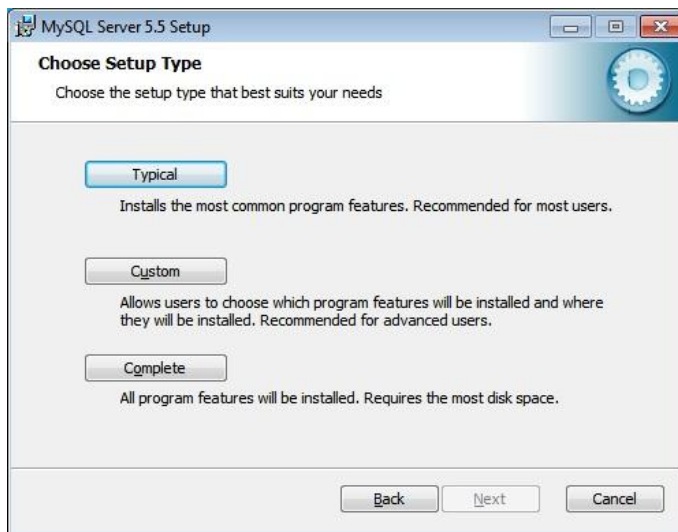
1. Download the msi installer packet for your windows system.  
If you use a 32 bit system use the “Windows (x86, 32-bit), MSI Installer”  
on a 64 Bit System use “Windows (x86, 32-bit), MSI Installer” packet.
2. Start the setup.



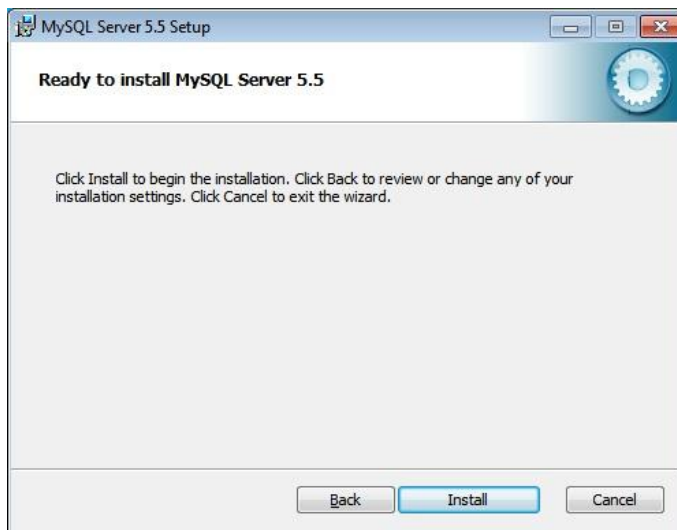
3. Agree to the license



#### 4. Choose the typical setup



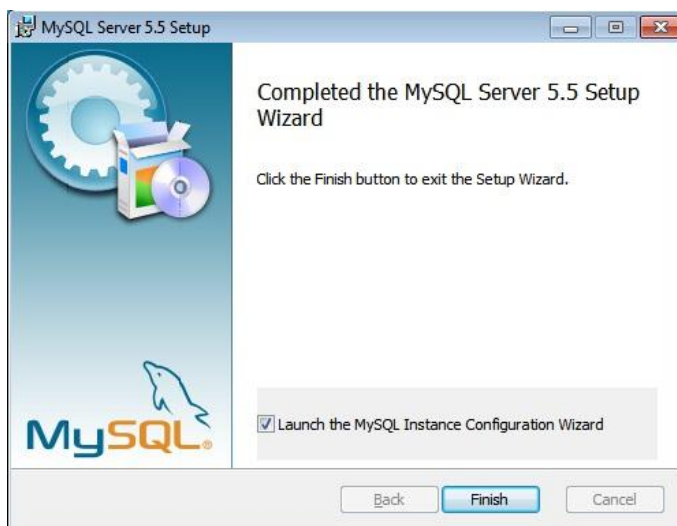
#### 5. Click on "Install"



#### 6. The installation runs.

#### 7. Some informations / advertisements are shown. Click on "Next"

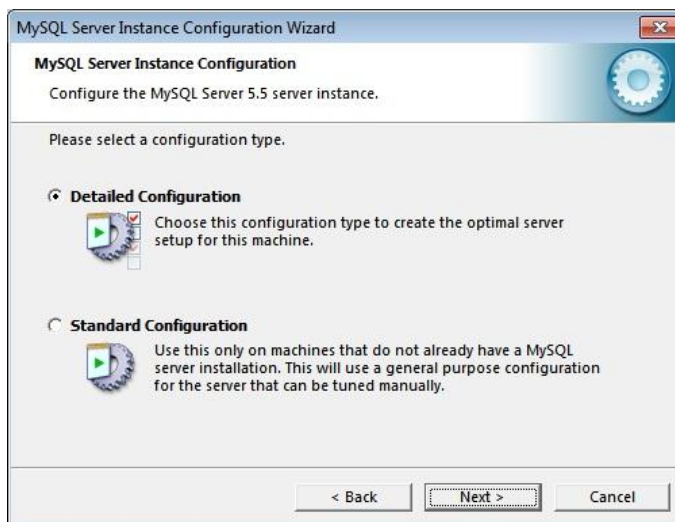
#### 8. Launch the MySQL Instance Configuration Wizard



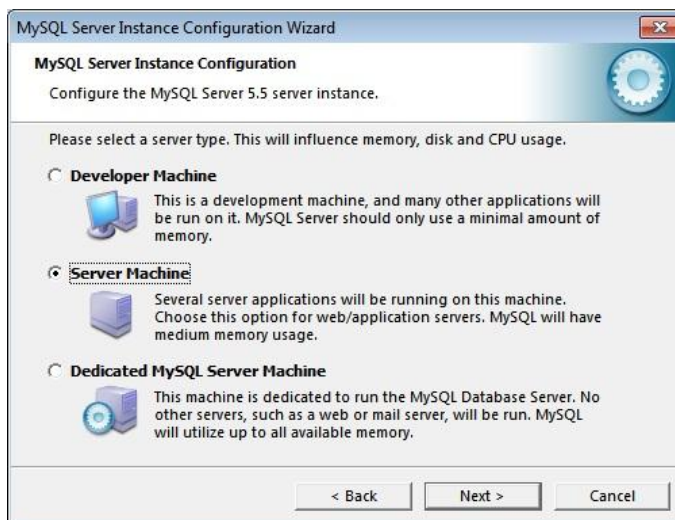
9. The wizard opens. Click “Next”



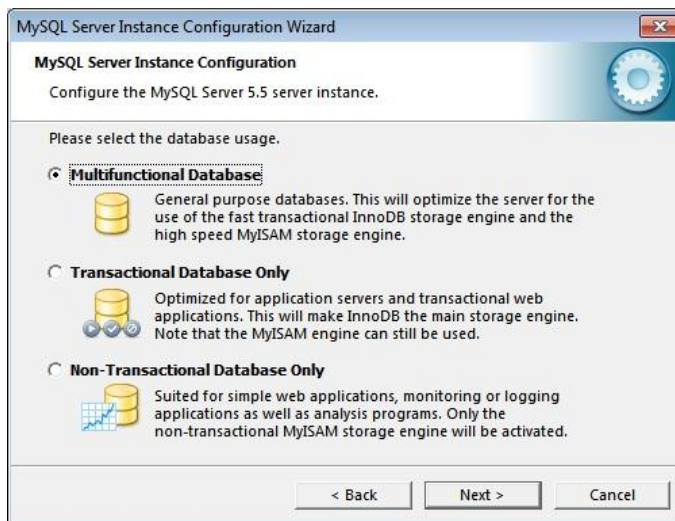
10. Choose the “Detailed Configuration” to adopt the installation to your needs



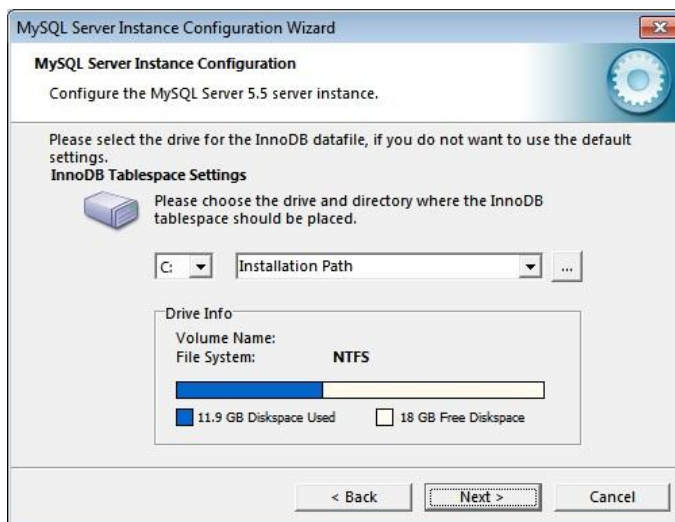
11. Choose “Server Machine” for production usage and click “Next”.



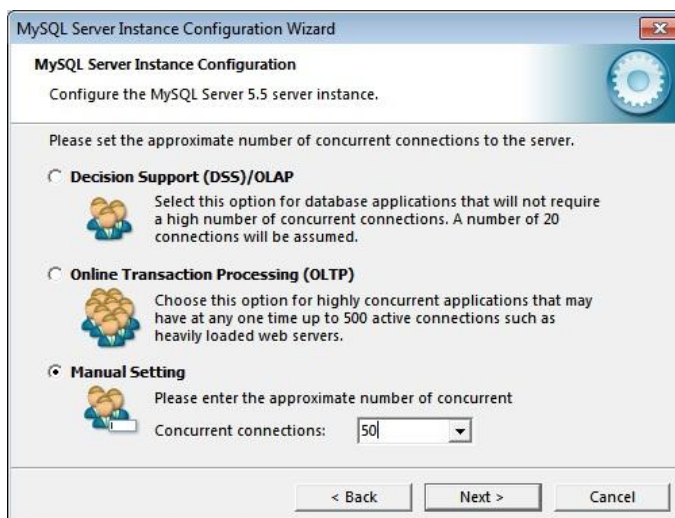
12. Choose “Multifunctional Database” and click “Next”



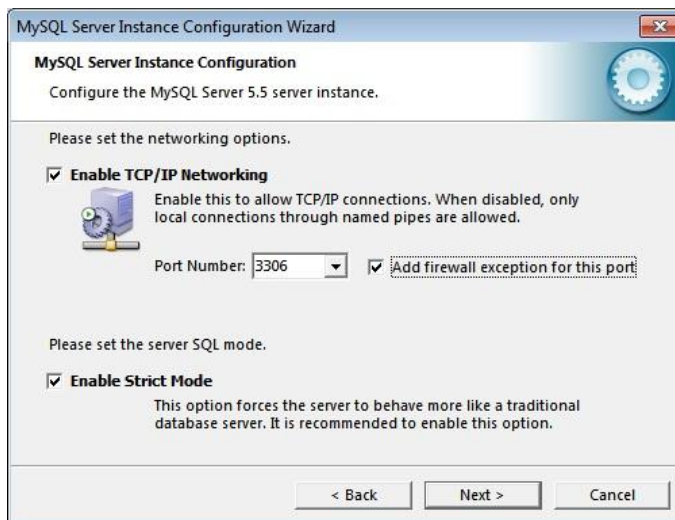
13. Specify the installation path or leave it at default. Click “Next”



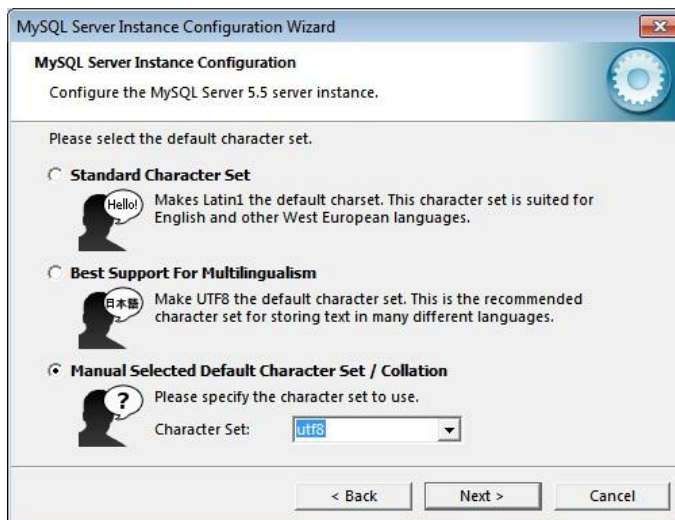
14. Depending on how many clients should connect to the database, set the value for concurrent connections.



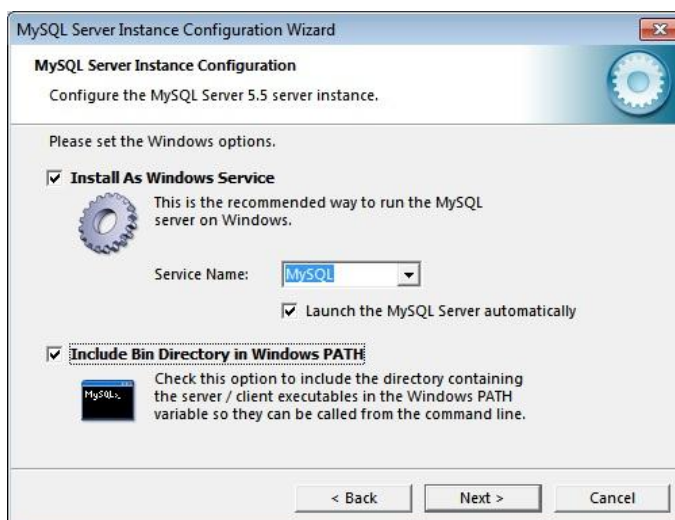
- Check “Add firewall exception for this port” to enable connections from the clients. Keep the checkmark on “Enable Strict Mode”. Click “Next”



- Select “Manual Selected Default Character Set / Collation” and choose “utf8” since InLoox supports Unicode. Click “Next”.



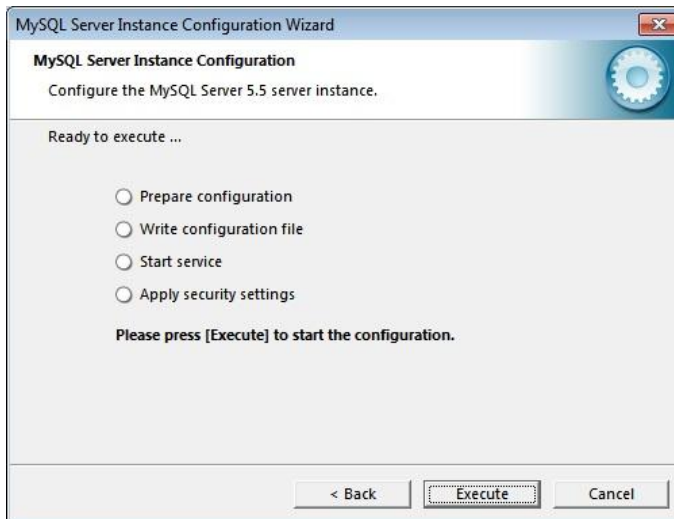
- We suggest to run MySQL as a service. For an easy usage check “Include Bin Directory in Windows PATH”. Click “Next”.



18. Enter a secure password for the root user. Click “Next”.



19. Click “Execute” to start the configuration.



20. The installation and main configuration is now finished.

Proceed with creating a user to setup and connect the InLoox database.

---

## Create a user to setup and connect to the database

1. Open the windows command shell.
2. Type the following command to connect as root user to the database. Enter the password you specified during the setup.  
`mysql -u root -p`
3. Now you are at the MySQL command prompt and can enter statements to create a user and set the needed privileges.
4. Type the following command to create the user “inloox” who is allowed to connect from any host. Please replace the “password”.  
*CREATE USER 'inloox'@'%' IDENTIFIED BY 'password';*
5. Type the following command to grant the user the right to create a database during setup.  
*GRANT CREATE ON \*.\* TO 'inloox'@'%' IDENTIFIED BY 'password' WITH GRANT OPTION;*
6. Type the following command to give the user all privileges on the inloox database.  
*GRANT ALL PRIVILEGES ON inloox.\* TO 'inloox'@'%' IDENTIFIED BY 'password';*
7. Now the user setup is complete you can proceed with the InLoox installation.

## Alternative 2: Installation of the MySQL Server with XAMPP

There are, as mentioned, different possibilities to install a MySQL database. One of the fastest is the use of the XAMPP project.

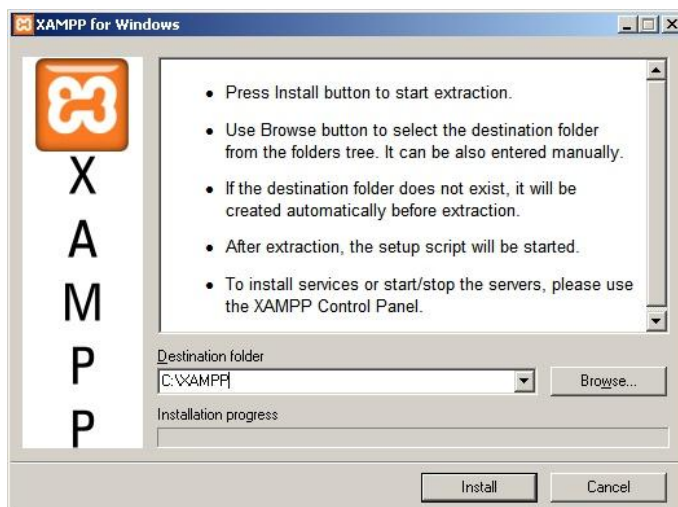
Please note that the easy standard setup does not focus on production use, since several logins use an empty password and are not secure with that configuration. See the XAMPP FAQ for information on how to secure the setup.

<http://www.apachefriends.org/en/faq-xampp-windows.html>

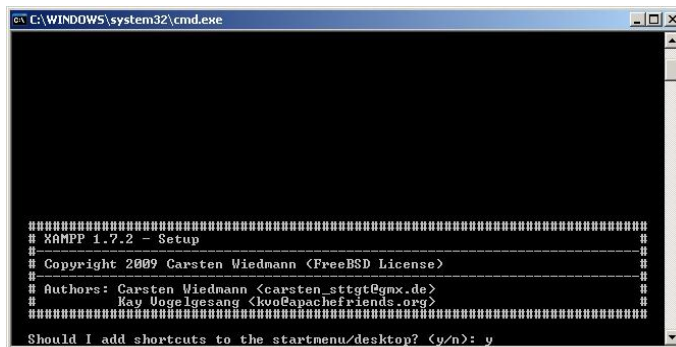
The advantage of the use of XAMPP definitely is the configuration. With XAMPP MySQL is already activated for remote control and PHP is configured for the use of the administration tool phpMyAdmin. Besides phpMyAdmin is installed and configured. Hereby a comfortable graphical administration of the MySQL Server is possible.

In the following the installation of XAMPP and the preparation for the installation of an InLoox database is explained step by step.

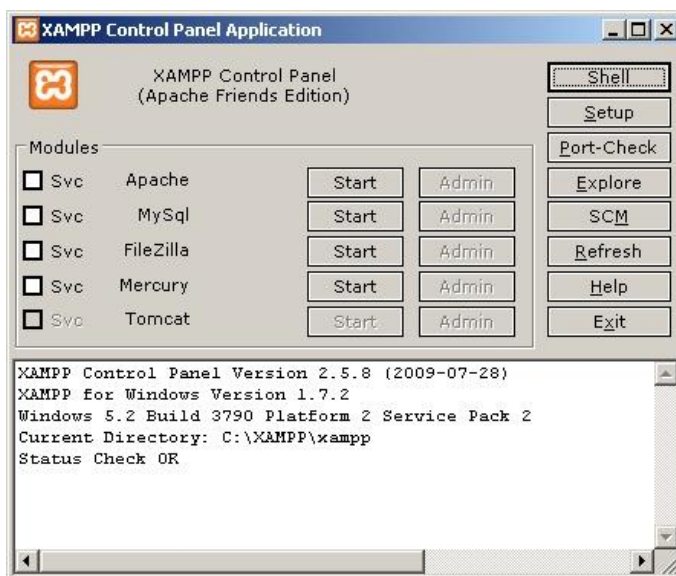
### 1. Installation of XAMPP



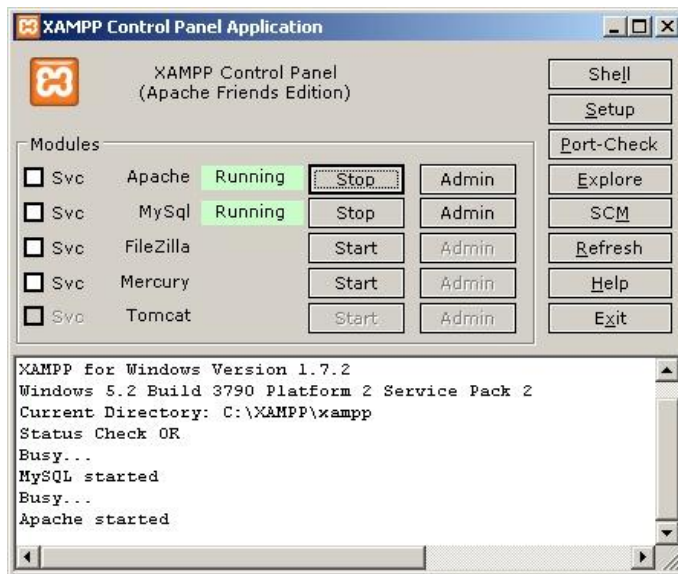
2. During the installation you will have to answer several questions regarding the configuration
  - a. Shall there be build shortcuts for starting menu and desktop? (Standard: yes)
  - b. Eventually you will be asked whether the installation path shall be adjusted (Standard: yes)
  - c. Shall the installation be used for an USB stick? (Standard: no)
  - d. The time zone recognized by the setup will be displayed.



3. Start the XAMPP administration panel by clicking on the XAMPP icon (i.e. on the desktop) after the successful installation.



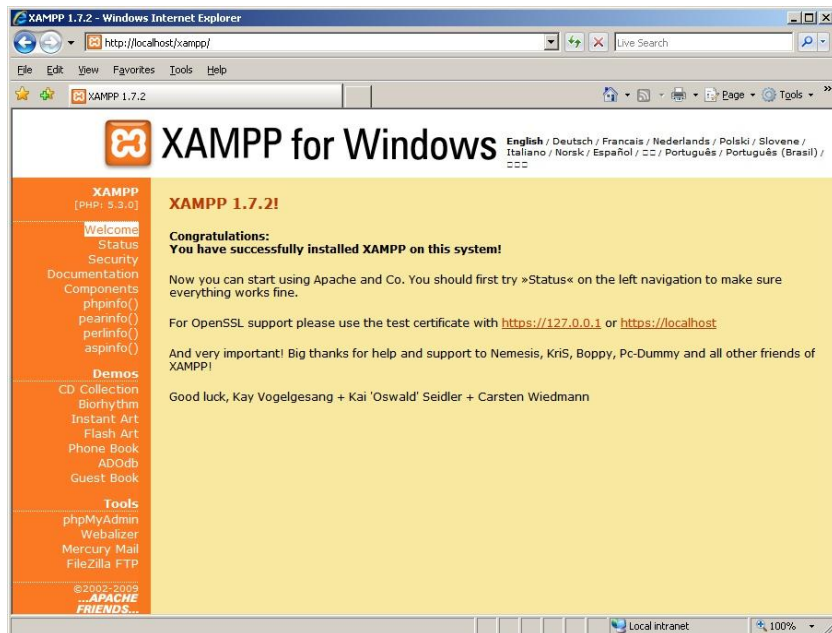
4. Start MySQL and Apache. The Apache Web server is going to be used to display the administration interface phpMyAdmin.



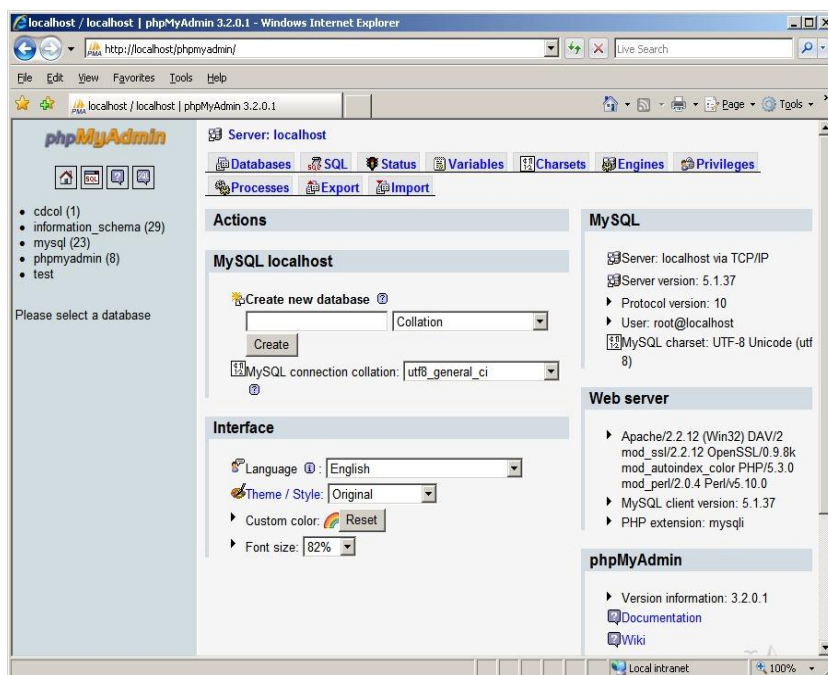
5. Click on the button „Admin“ for the Apache Process to open the XAMPP site within your browser. With opening the browser the following dialog is displayed:



6. After the choice you see the XAMPP administration interface. Chose phpMyAdmin in the left menu to switch to the administration interface for MySQL



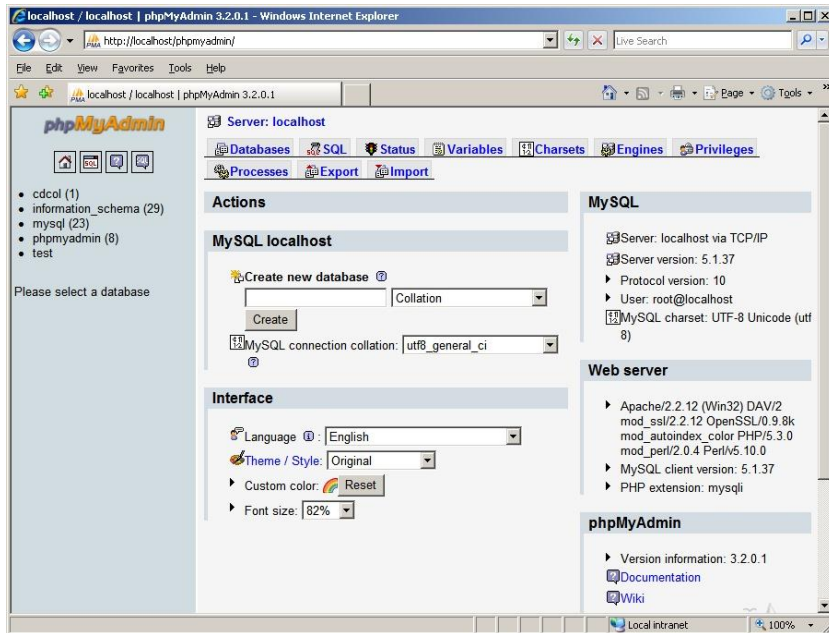
7. Following you see the phpMyAdmin interface:



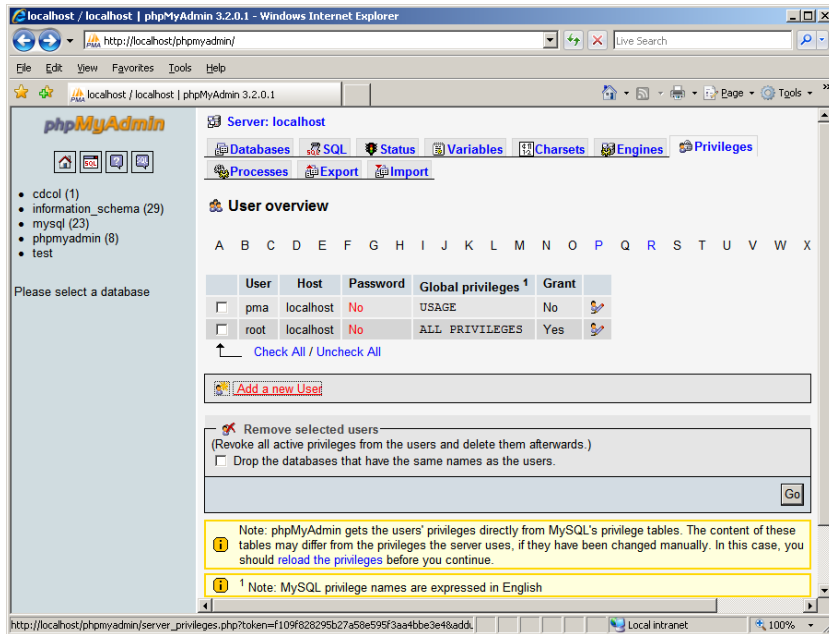
Now a user for setting up the InLoox Database and connect to it has to be created. You can either choose to do this on the mysql commandline or with phpMyAdmin. To open the MySQL commandline go to the Windows prompt and switch to the installation folder of XAMPP MySQL (C:\xampp\mysql\bin). Now you can run “mysql –u root” and proceed with the chapter “Create a user to setup and connect to the database”. For creation with phpMyAdmin proceed with the next chapter.

## Create a user to setup and connect to the database with phpMyAdmin

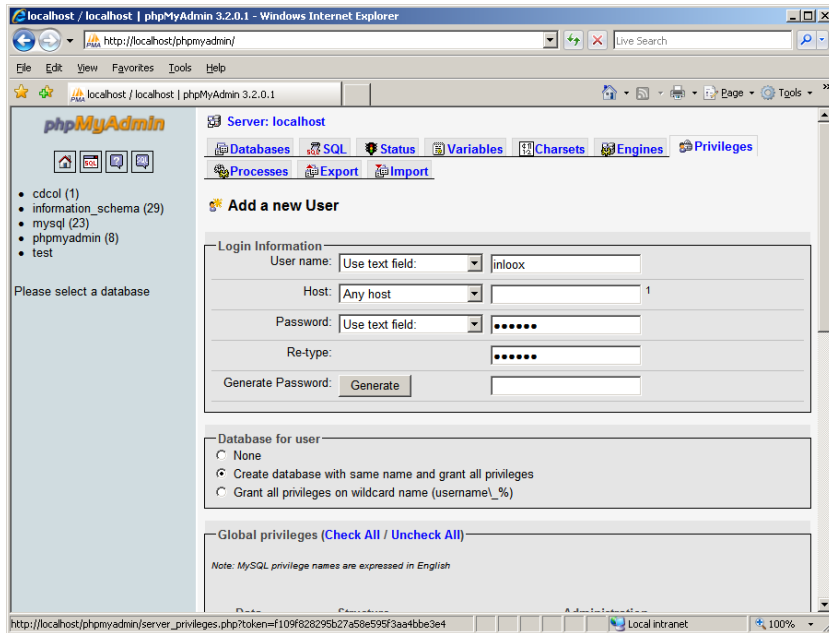
1. Build a new user with the help of the administration interface to use it afterwards for InLoox. Click on the button „Privileges“



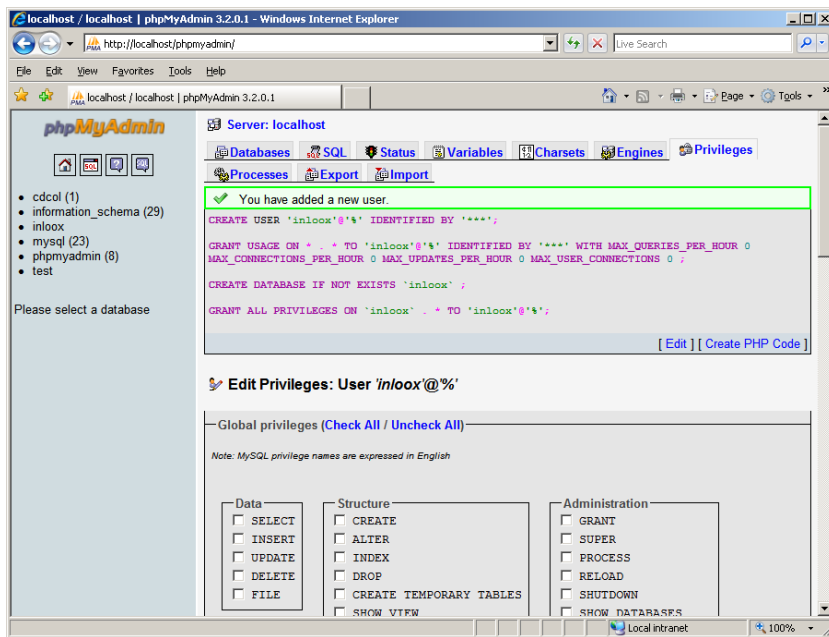
2. Build a new user by clicking on „Add a new user“. phpMyAdmin enables you to build a database with this user name and grant all privileges. Use this method to save yourself some steps of configuration. Build a user with the name “inloox” to create the InLoox-database



- Click under „Database for user“ on „**Create database with same name and grant all privileges**“



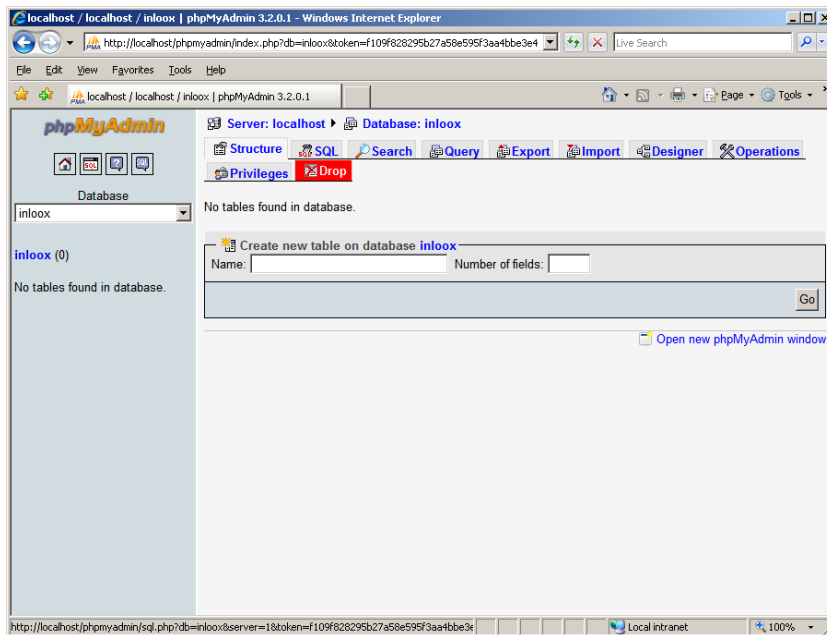
- After creating the database you see following dialog displayed:



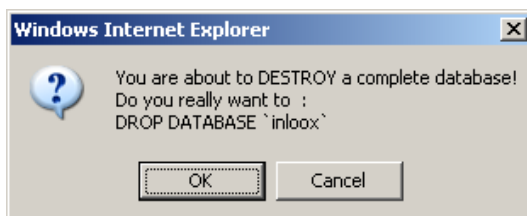
5. As this approach also creates a database named “inloox”, however the InLoox-Setup does this itself and refuses the installation with an already existing database for reasons of security, you have to **delete this database now**.

Now the database is going to be created to grant the adequate privileges to the user.

6. To delete the database you have to switch to the database inloox. For reasons of safety you should check whether the database contains data. If this is not the case you see a „0“ behind the name of the database. Click on „**Delete**“ while the database is chosen.



7. Confirm the following dialog with **OK**



The preparation of the MySQL database now is completed. You can continue with the normal installation of InLoox.

---

## Opening a port

**Please keep in mind:** opening a port can lead to a safety risk. Please implicitly check the necessary measures of safety before opening the port! **Make sure the port of the database server is *not blocked*.** Check the calibration of the server`s firewall as well as the one`s of the hardware of the network.

The standard port of MySQL Server is: 3306