



# **Project management - integrated into Outlook**

InLoox 6.x update to InLoox 6.7.x

## **An InLoox Whitepaper**

Published: May 2011

Copyright: © 2010 InLoox GmbH.

You can find up-to-date information at <http://www.inloox.com>

The information contained in this document represents the current view of InLoox on the issues discussed as of the date of publication. Because InLoox must respond to changing market conditions, it should not be interpreted to be a commitment on the part of InLoox, and InLoox cannot guarantee the accuracy of any information presented after the date of publication.

This White Paper is for informational purposes only. INLOOX MAKES NO WARRANTIES, EXPRESS, IMPLIED OR STATUTORY, AS TO THE INFORMATION IN THIS DOCUMENT.

Complying with all applicable copyright laws is the responsibility of the user. Without limiting the rights under copyright, no part of this document may be reproduced, stored in or introduced into a retrieval system, or transmitted in any form or by any means (electronic, mechanical, photocopying, recording, or otherwise), or for any purpose, without the express written permission of InLoox GmbH.

© 2011 InLoox GmbH. All rights reserve.

IQ medialab and InLoox are either registered trademarks or trademarks of InLoox GmbH in Germany and/or other countries.

The names of actual companies and products mentioned herein may be the trademarks of their respective owners.

---

## Contents

General information .....	1
Update of the InLoox database .....	2

## General information

This document describes the steps required to successfully update an InLoox 6 database.

The update of a InLoox 6 version to InLoox 6.7.x requires the update of the InLoox database. It is necessary to back-up the InLoox database before the update, since it is not possible to downgrade back to the earlier version.



Please note that the support of Outlook 2000 and Outlook XP has ended with InLoox 6.5.

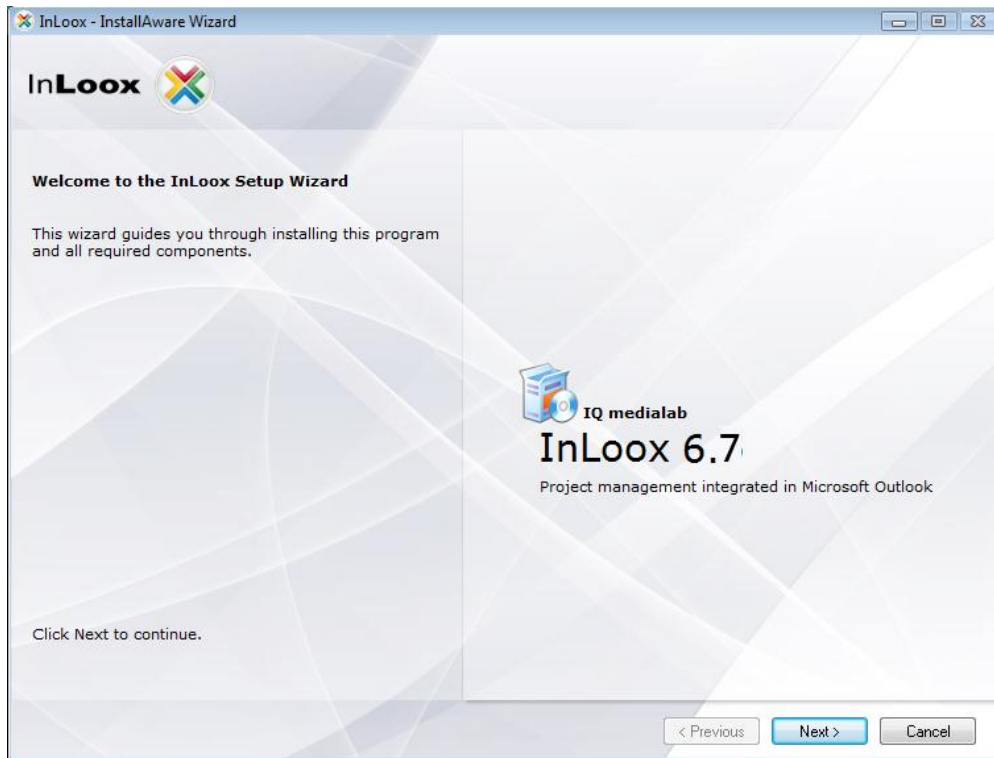
Proceed with the following steps to back-up the database.

1. Ensure that there are no users currently connected to the database
2. Connect to the InLoox database and make a complete backup.  
All supported database manufacturers provide a description and the tools for backing up data
3. Update the InLoox database as described in the following chapter.

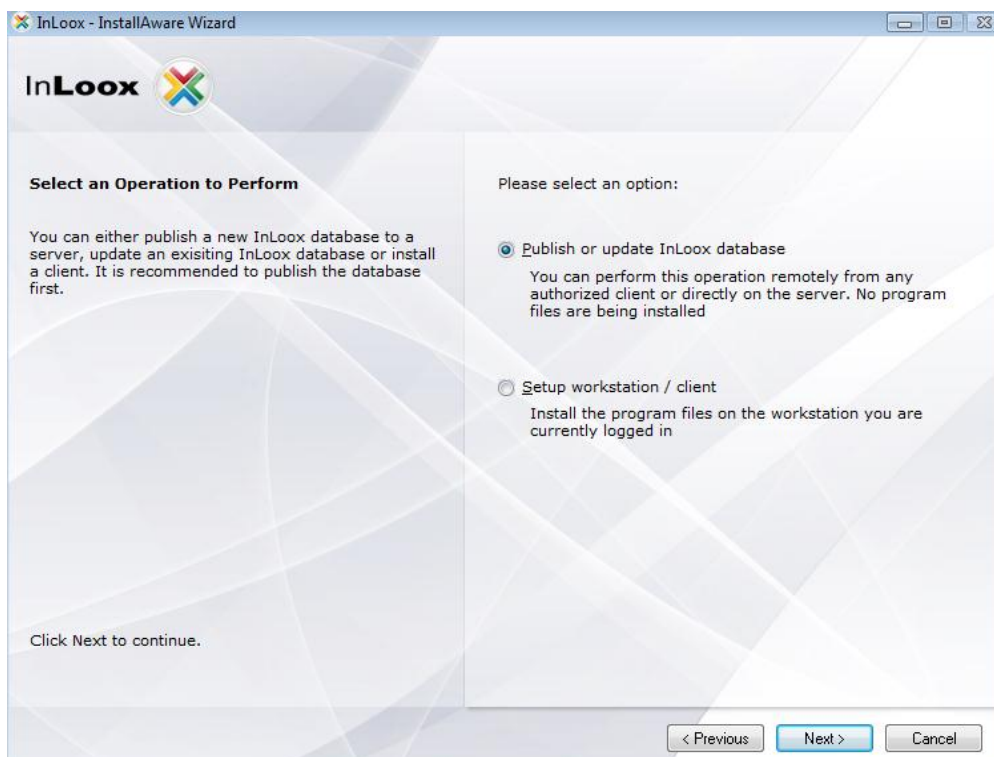
If you are not sure whether a database update is required or not, you can always try to run an update. If so, the setup indicates that the database is up-to-date.

## Update of the InLoox database

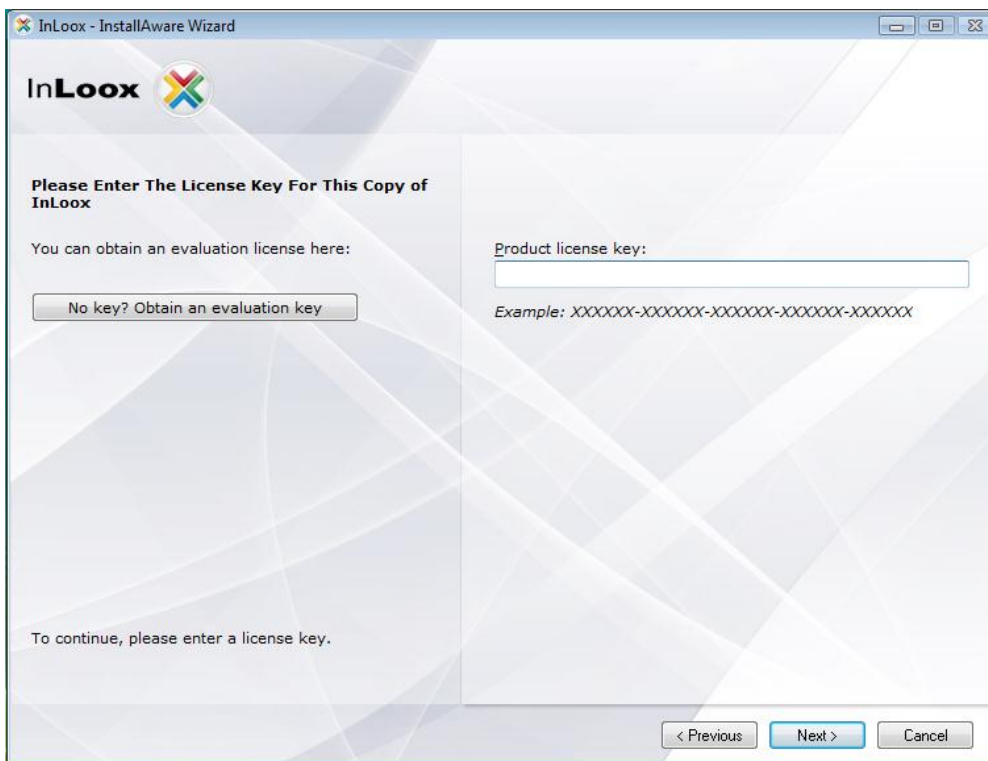
1. Start the setup file and choose the language for installation
2. Click on **Next**



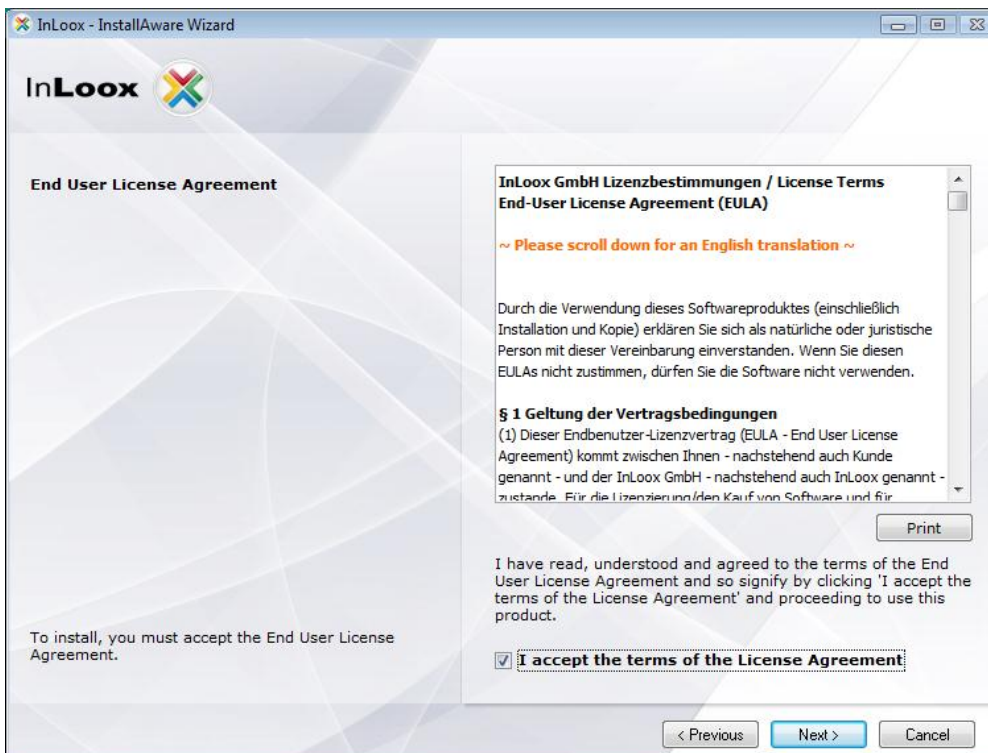
3. Choose **“Publish or update InLoox database”**



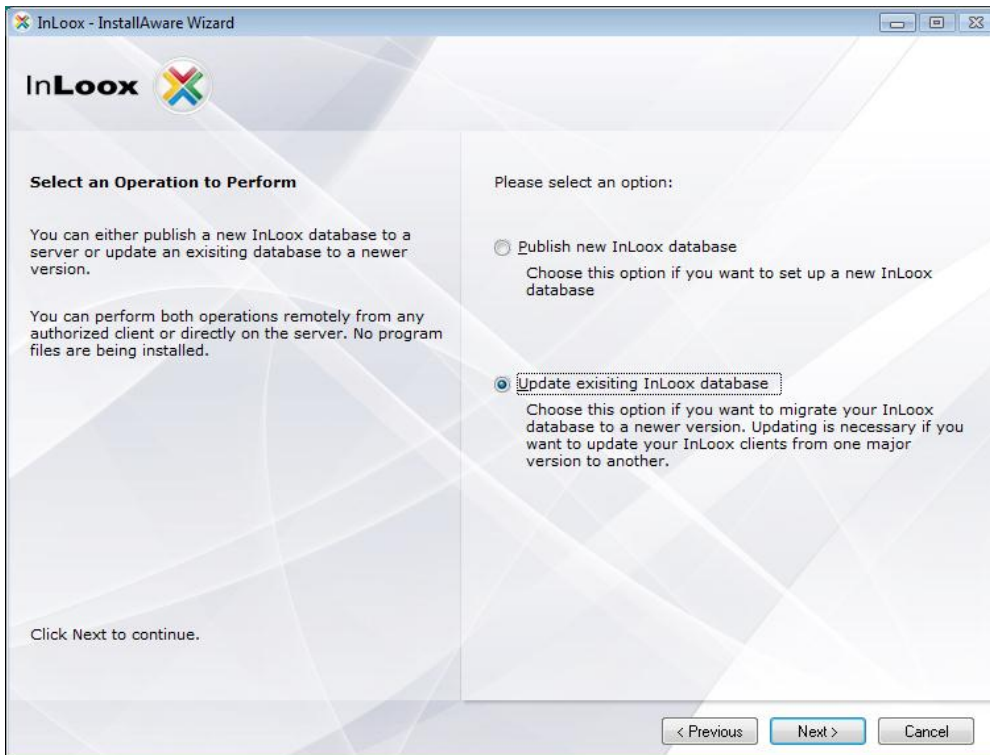
4. Enter your license key



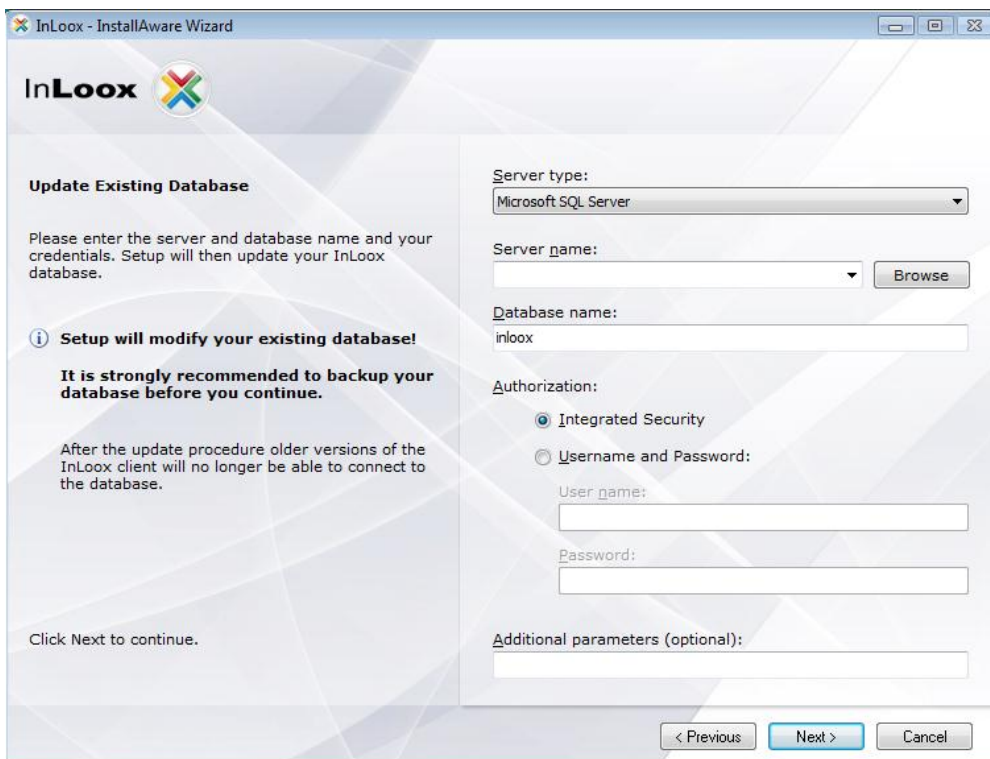
5. After accepting the license agreement click on **Next**



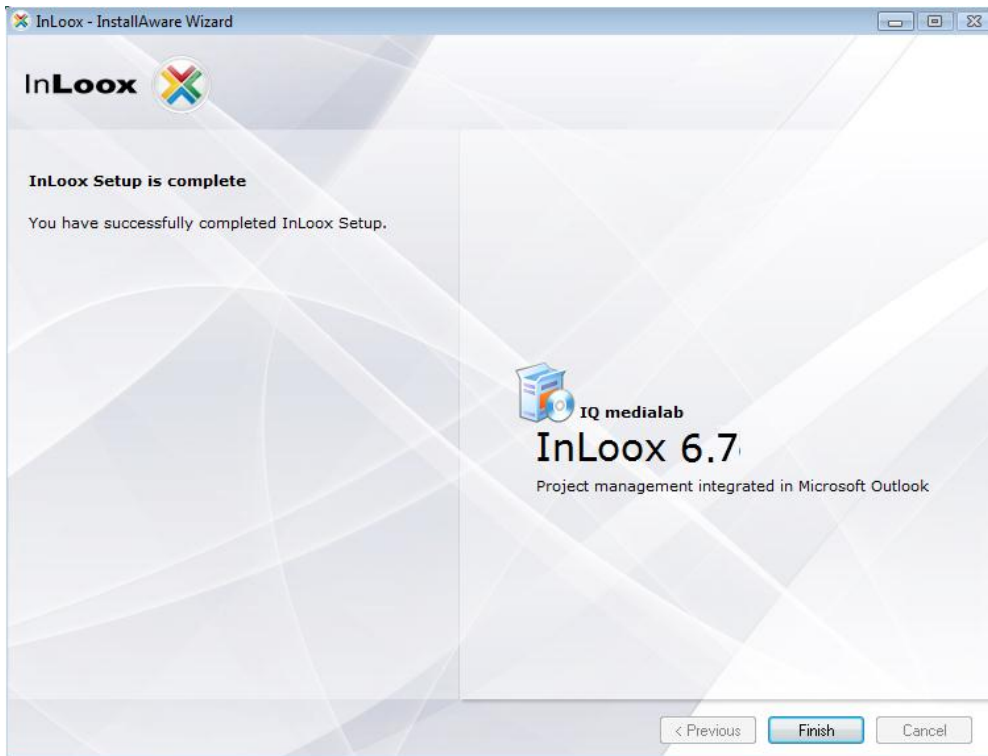
6. Choose “Update existing InLoox database”



7. Enter the data to connect to your InLoox database and click on **Next**



8. The setup now updates the InLoox database automatically. Please note that this process can take several minutes depending on the amount of data in the database.
9. The update is finished



The InLoox Clients should, now, be updated. To do this, start the setup file on the client computer and choose "Workstation-/Client-Installation". There is no need to uninstall the previous version, the setup routine will take this into consideration.