

**InLoox**



# **Project management - integrated into Outlook**

Installation guide for InLoox 5.x on Windows Terminal Server

An IQ medialab Whitepaper

Published: May 2008

You can find up-to-date information at <http://www.inloox.com>

The information contained in this document represents the current view of IQ medialab on the issues discussed as of the date of publication. Because IQ medialab must respond to changing market conditions, it should not be interpreted to be a commitment on the part of IQ medialab, and IQ medialab cannot guarantee the accuracy of any information presented after the date of publication.

This White Paper is for informational purposes only. IQ MEDIALAB MAKES NO WARRANTIES, EXPRESS, IMPLIED OR STATUTORY, AS TO THE INFORMATION IN THIS DOCUMENT.

Complying with all applicable copyright laws is the responsibility of the user. Without limiting the rights under copyright, no part of this document may be reproduced, stored in or introduced into a retrieval system, or transmitted in any form or by any means (electronic, mechanical, photocopying, recording, or otherwise), or for any purpose, without the express written permission of IQ medialab GmbH.

© 2008 IQ medialab GmbH. All rights reserved.

IQ medialab and InLoox are either registered trademarks or trademarks of IQ medialab GmbH in Germany and/or other countries.

The names of actual companies and products mentioned herein may be the trademarks of their respective owners.

# Contents

- Configure InLoox on Windows Terminal Server ..... 1
  - System requirements ..... 1
  - Installation ..... 1

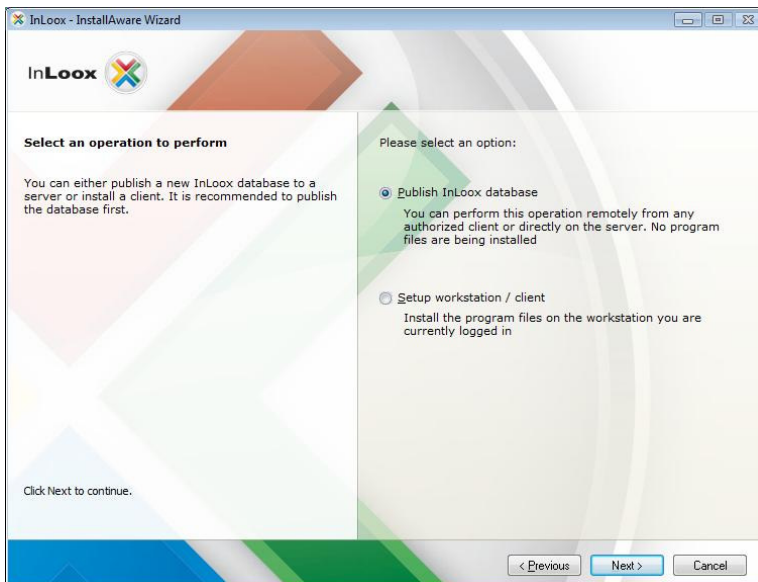
# Configure InLoox on Windows Terminal Server

## System requirements

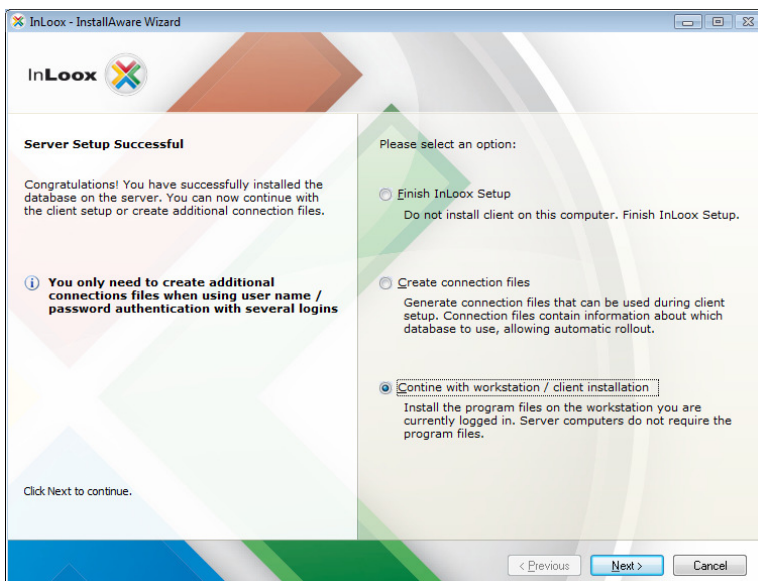
- Terminal Server (e.g. Windows Terminal Server, Citrix...)
- InLoox Workgroup / Enterprise Edition
- [Registration files](#) „DeActivateToolbar.zip“ from the download area at [www.inloox.com](http://www.inloox.com)

## Installation

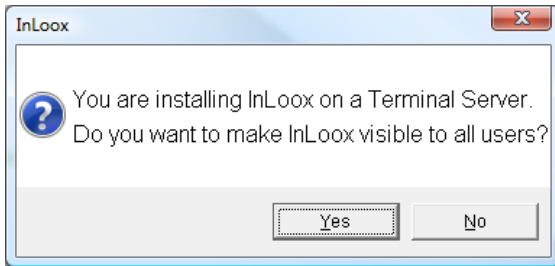
1. Login as administrator on the Terminal Server.
2. Install the database (if not already available) - you find a detailed description of the installation under [InLoox 5.x Installation Guide](#)



3. Afterwards install the client on the Terminal Server



4. The following dialog appears when installing on a Terminal Server

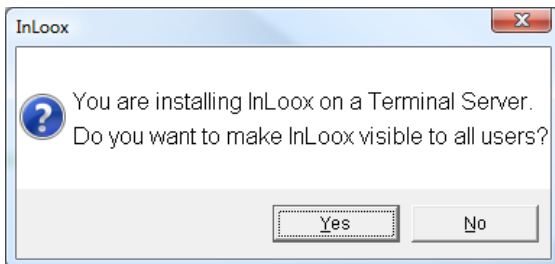


Now you have to control the visibility of the Add-in for those users, who use it.

The visibility of the Add-in is controlled on the Terminal Server by the registry. There are 2 alternatives for controlling the visibility.

**Alternative 1:** (Registration keys with permission)

1. Take care that no users are connected to the Terminal Server
2. Select the option **Yes** in the dialog. Hereby the Add-in is generally **activated**.

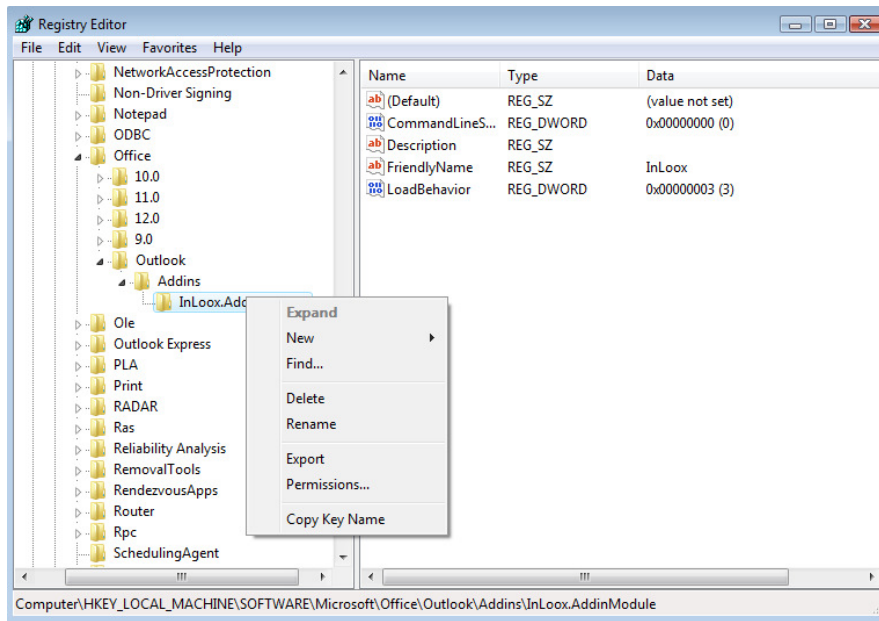


3. Execute the registry editor „regedit.exe“

4. Right-click on the key  
„HKEY\_LOCAL\_MACHINE\SOFTWARE\Microsoft\Office\Outlook\Addins\InLoox.AddinModule“

or with 64Bit machines

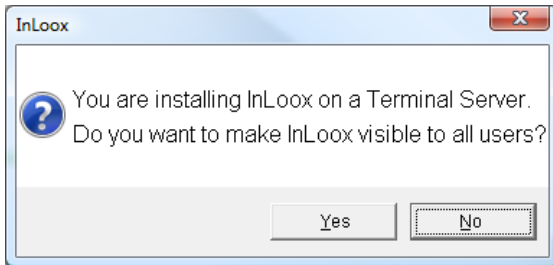
“HKEY\_LOCAL\_MACHINE\SOFTWARE\Wow6432Node\Microsoft\Office\Outlook\Addins\InLoox.AddinModule”



5. Click on **Permissions...**
6. Set the permissions according to your requirements. It is advisable to create a user group for the InLoox users, who receive appropriate permissions on the registry file. This group receives the access to the InLoox Toolbar. The administrator should receive explicit permissions.
7. Check whether the following key exists (this depends on the Terminal Server)  
“HKEY\_LOCAL\_MACHINE \ SOFTWARE \ Microsoft \ Windows NT \ CurrentVersion \ terminal server \ Install \ software \ Microsoft \ Office \ Outlook \ ADD in \ the InLoox.AddinModule”
  - a. Backup this key (via export)
  - b. Delete the key
8. Finished.

**Alternative 2:** (Write registration keys only for selected users)

1. Select the option **No** in the dialog. Hereby the Add-in is generally **deactivated**.



2. The users, who should see InLoox, must login at the terminal server and have to execute the file „Enable Add-in on user of profiles (HKCU) .reg“.

This also can be realized by automatic login scripts. The reg file is executed in silent mode.

```
regedit.exe /s „Enable Addin on user of profiles (HKCU) .reg “
```

3. Finished