

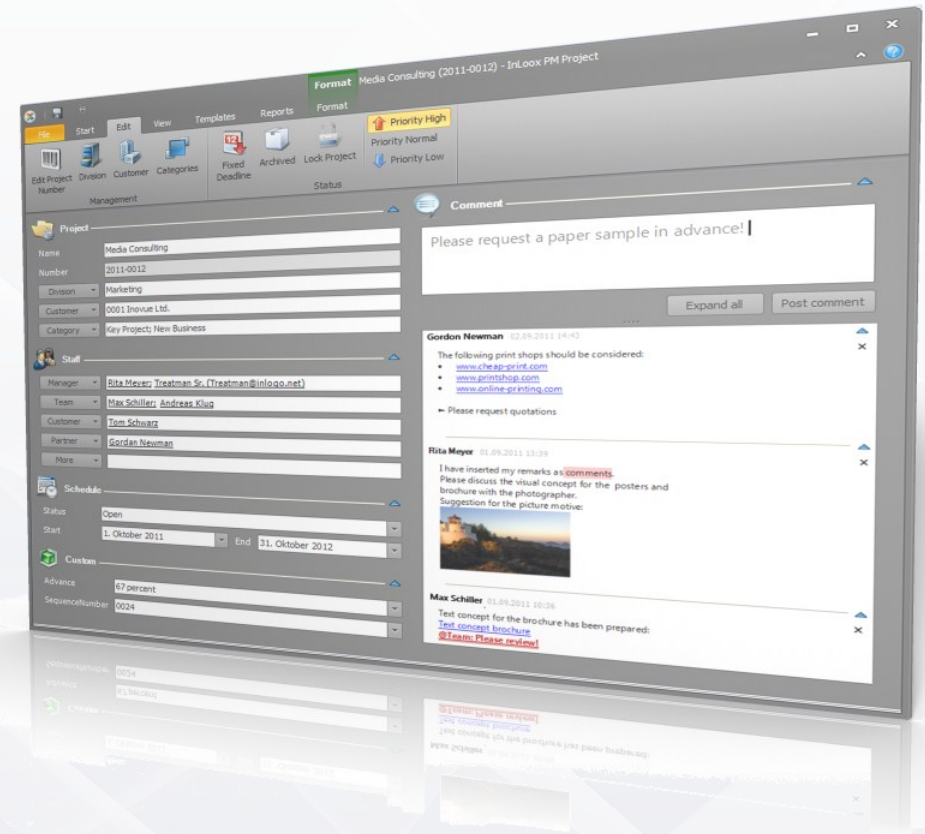
New Features of Version 7

InLoox PM 7 — Your Idea.

Inspired by the feedback of over 30,000 users worldwide, InLoox PM 7 facilitates your day-to-day project management with a whole host of innovative and practical features.

The improved user interface makes working with InLoox PM 7 even easier and more intuitive. Benefit from the flexible time planning that adjusts even better to the project planning methods in your company. InLoox PM 7 takes professional project management to the next level.

Find out, how InLoox PM 7 facilitates your everyday project work and test the latest product generation with all features for free and without risk:
www.inloox.de/v7



New Features of Version 7

As Intuitive as Usual — More Comfortable than Ever

InLoox PM 7

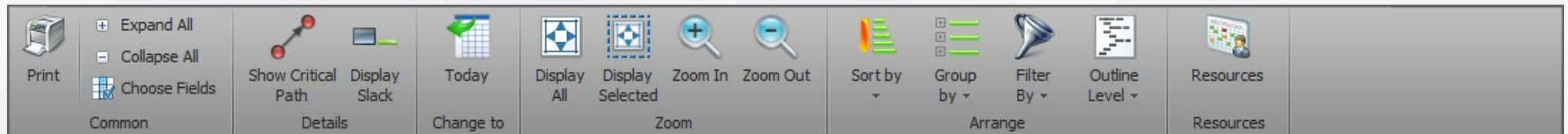
Major features at a glance

InLoox PM 7 improves your day-to-day project work with new features that make project management clearer, easier and more comfortable.

DESIGN & COMFORT

User interface

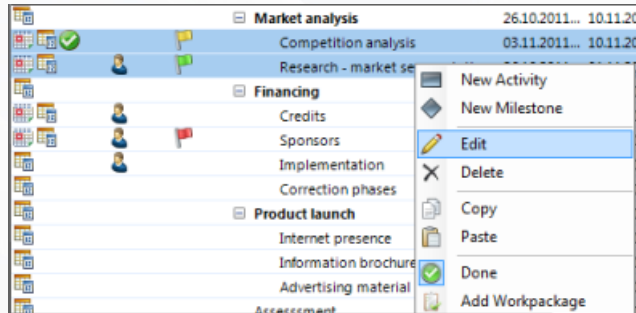
Stay focused with the new Microsoft® Outlook 2010 user interface design. In InLoox PM 7, features and commands are exactly where you need them to complete a task in a quick and comfortable way. Simplified, sizeable dialog boxes provide a whole new level of user-friendliness.



New Features of Version 7

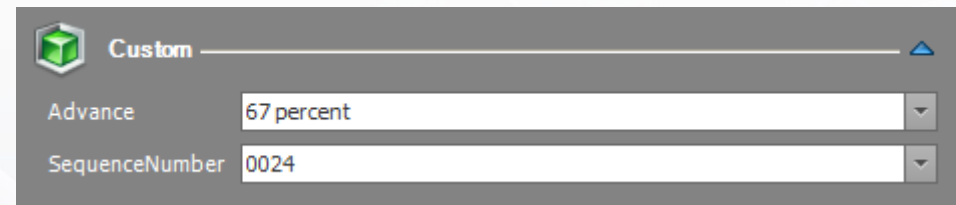
Multi-selection and multi-editing

Select several elements – e. g. milestones, activities, documents or time tracking entries – and edit them at the same time. This way, you save time and reduce incorrect input.



Improved custom fields

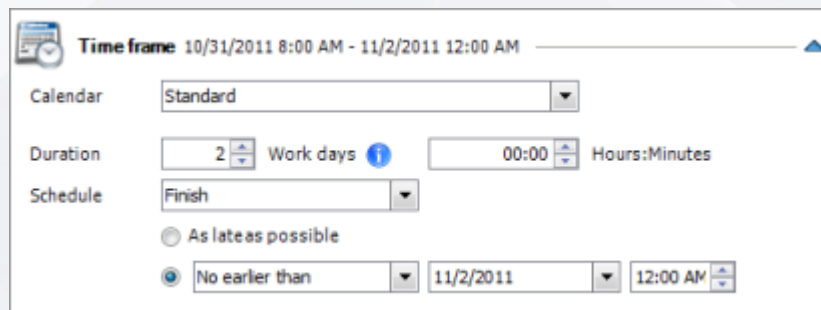
Now, custom fields look and feel like standard program fields. User-defined fields are no longer displayed as a list, but in a more user-friendly way. The new custom fields allow direct input without going the long way round.



PLANNING

Constraints

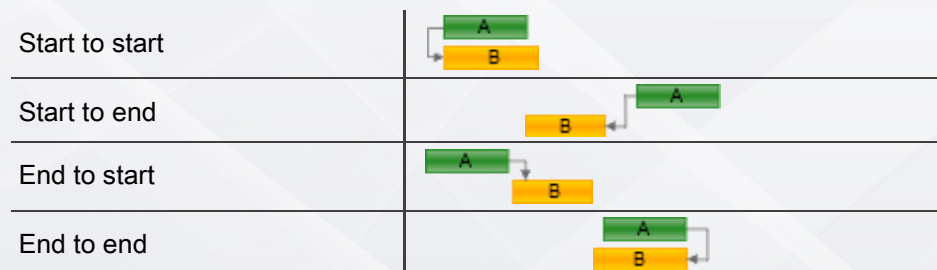
Set time constraints for activities and milestones in your project plan – e.g. “Start



on”, “Finish on”, “As soon as possible”, “As late as possible”, “No later than”, “No earlier than”. InLoox PM 7 then takes on the task of time planning. So, you can integrate all time requirements in InLoox PM with the result of a consistent project.

Dependencies

Define logical dependencies between planning elements and use the link methods of network planning. InLoox PM then calculates your optimal project plan.



New Features of Version 7

Slack

InLoox PM 7 indicates how far you can postpone a planning element until it affects the planned duration of your project. This will help you to keep an eye on your leeways so that you can focus on the essentials.

		Credits	08.09.2011...	30.09.201...	66,00 h		7,88 days
		Sponsors	08.09.2011...	30.09.201...	25,00 h		7,88 days
		Implementation	08.09.2011...	29.09.201...	25,00 h		8,88 days

Lags

Use positive and negative time lags between planning elements in your time planning. Depict easily time overlaps of planning elements as well as lead and waiting times. This allows you to plan your projects even more realistically.

		Assessment	21.09.2011...	13.10.201...	25,00 h	
		Media analysis	08.09.2011...	29.09.201...	25,00 h	

Backward Scheduling

Direction

Forward Scheduling
 Planned Start

Backward Scheduling
 Planned End

The choice is up to you: Develop your project plan from your current starting point or based on the desired due date— InLoox PM now offers you both planning directions.

Skill Management

Skills		
	Name	Description
<input type="button" value="New"/>	Relational databases	Experience in the use of relational databases
<input type="button" value="Edit"/>	DTP Expertise	At least one year of professional experience
<input type="button" value="Delete"/>	English language skills	Fluent in spoken and written
	Trade-fair experience	Experience in the management of a trade fair...

Browse the skills of your team members in InLoox PM. Hence, you find the suitable employees easily and quickly in your company and make sure you have the right people at the right place in your project.

New Features of Version 7

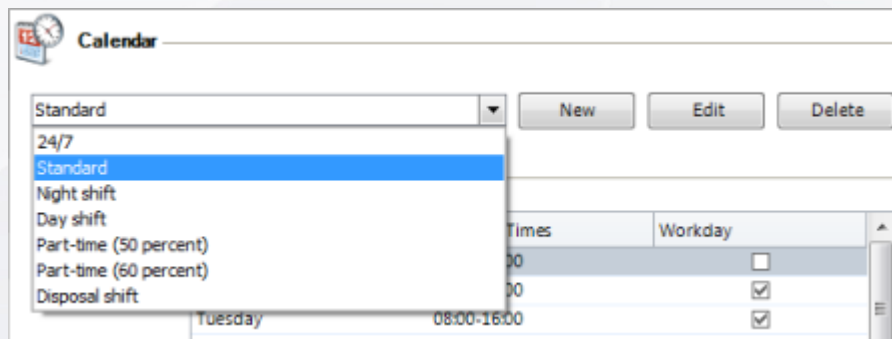
Undo and redo



InLoox PM 7 enables you to undo changes or to redo actions that you undid.

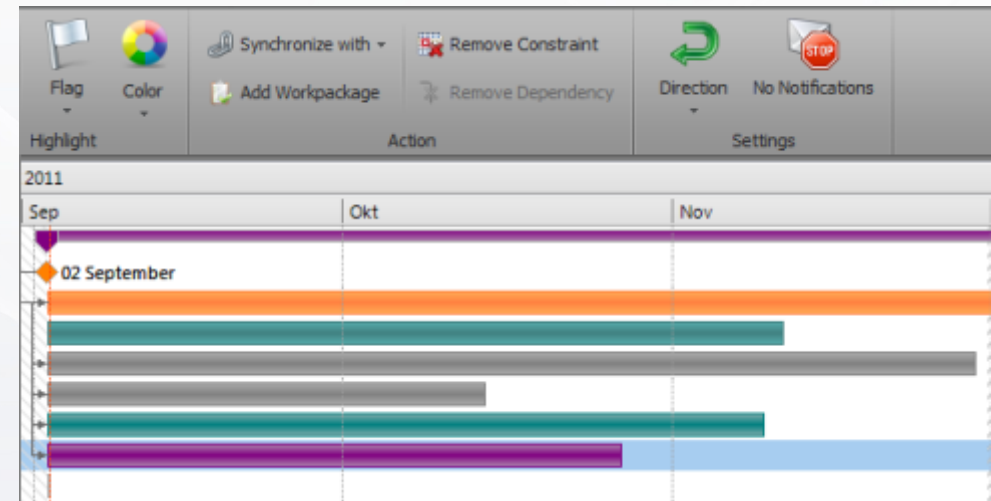
Individual color settings

Keep an eye on relevant details in your project plan. Highlight elements in your project plan using a color palette, e.g. to indicate responsibilities or priorities.



Individual working time calendar

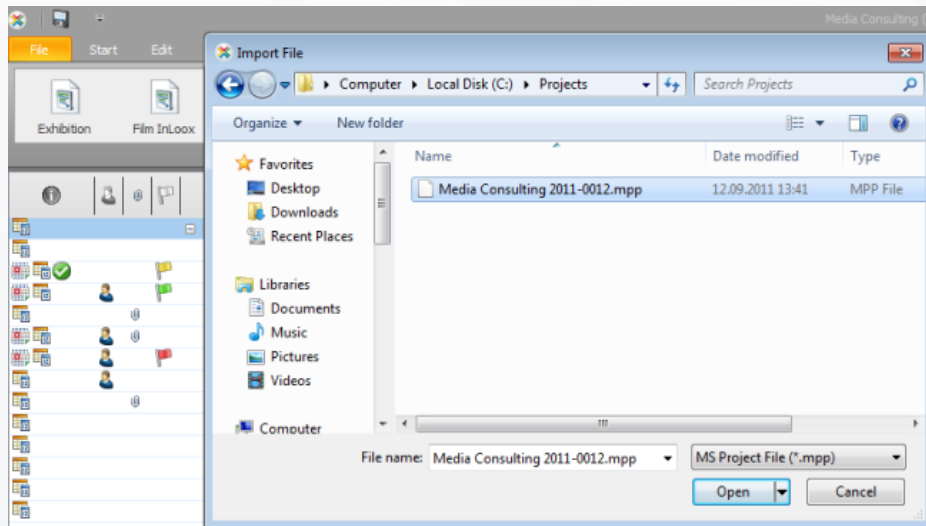
InLoox PM adjusts to the working times in your company in an intelligent way. Whether part-time, shift or weekend work – integrate individual working time models flexibly in InLoox PM.



New Features of Version 7

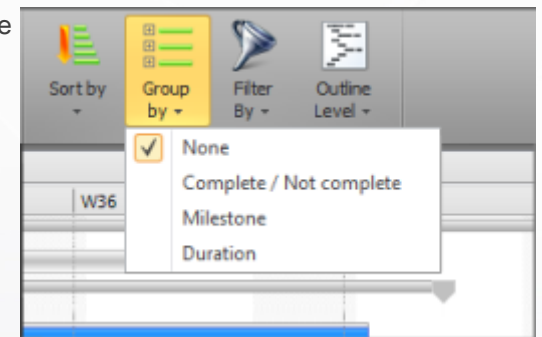
Import Microsoft Project 2010 files

Exchange project plans easily between InLoox PM and Microsoft Project 2010. Generate or read Microsoft Project 2010 files – without Microsoft Project or any previous knowledge.



Filter, sort, group

Filter, sort and group your project plan just as you like. Focus on details that are important to you and keep track, even of large project plans.



Edit in the line

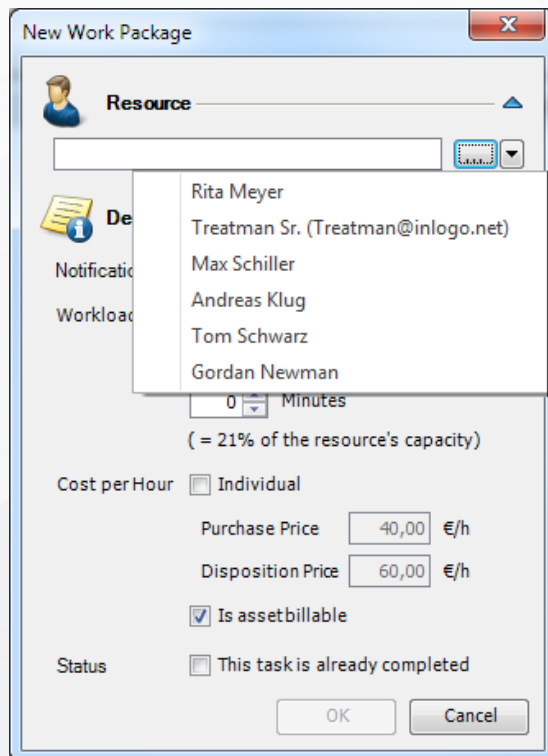
Changing your project plan will become even easier with InLoox PM 7. Now, it is no longer necessary to open planning elements to edit them. You can modify them directly in the line.

	Financing	02.09.2011...	24.11.2011 1...	
	Credits	14.11.2011...	21.11.2011 1...	
	Sponsor negotiations with	02.11.2011...	14.11.2011 1...	7,00 h
	Implementation	14.11.2011...	24.11.2011 1...	16,00 h
	Correction phases	02.09.2011...	14.09.2011 1...	12,00 h

New Features of Version 7

Quick selection of resources

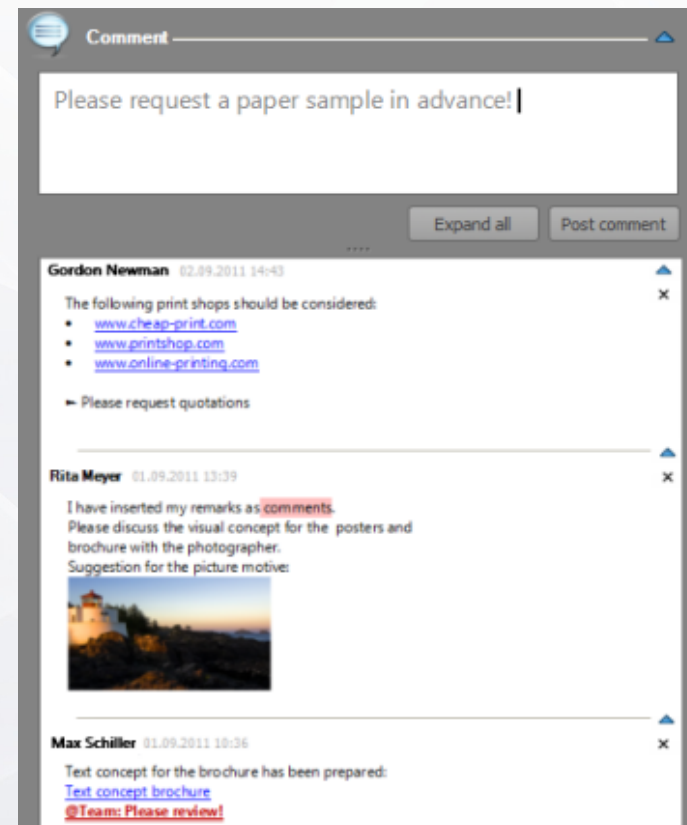
Find the required project resources even faster. Due to the new quick selection of resources, you don't have to search large address books – InLoox PM 7 offers you a compact pre-selection of project resources that you use regularly.



COMMUNICATIONS

Project comments

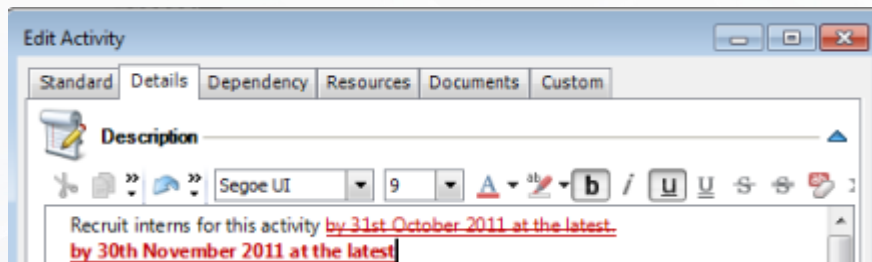
Exchange project notes easily as formatted text, hyperlink or image with other team members. In the comment history, you can track the flow of information anytime.



New Features of Version 7

Formatted text

InLoox PM 7 makes the exchange of information with you team fast and easy. Use formatted text, images, hyperlinks, colors and symbols to convey additional information about activities, time tracking entries, budgets and documents to your team members.



DOCUMENTING

Document preview

InLoox PM 7 accelerates your work with project documents. Now, you don't have to open documents and images to see their content. Have a quick look at project-related Office documents and images with the InLoox PM document preview.

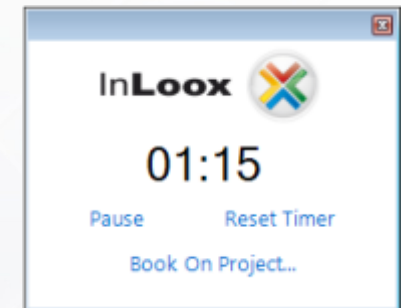
Filename	Folder	Type	Size	Related Objects
2011-0012 Media consulting.msg	\\S6\...	Ou...	27 KB	
Analysis (2).xlsx	C:\Us...	Mic...	40 KB	Financing; Information brochures; Advertising material; Research - market segm...
Analysis 2011 (1).odt	C:\Us...	Op...	4 KB	Concept; Assessment
Assessment of Value.xlsx	\\S6\...	Mic...	8 KB	

	A	B	C	D
1	Level	Campaign G8 Member States		
2	Scenario	Costs	Output	Intereste
3	31.01.-06.02.2011	7.246,00 €	3.095	402
4	24.01.-30-01.2011	1.151,00 €	801	88
5	Ratio	6,30	3,86	4,57
7	07.02.-13.02.2011	2.194,57 €	1.023	97
8	Marktforschung	0,30	0,33	0,34

TIME TRACKING

Time tracking with the stop watch

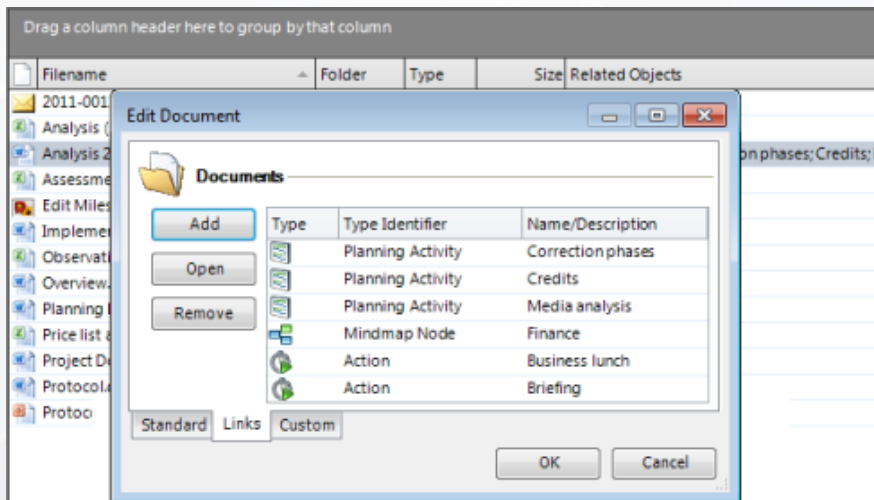
Record your own time efforts with the integrated stop watch to-the-minute. Then simply post the working time directly to the project you've been working on. Staying focused on your tasks and documenting your working time precisely has never been easier.



New Features of Version 7

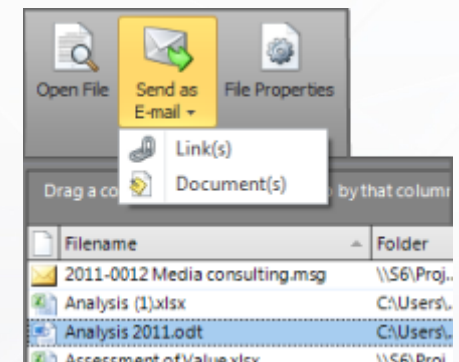
One-stop document management

The InLoox PM document folder now offers you an up-to-date overview of *all* project documents and *all* document links in use. Navigate from the document folder to the linked mind map, planning or time tracking element in an instant. Reversely, open documents attached to elements with only one click.



Direct mailing

Send your project documents directly from the InLoox PM document folder as an e-mail. This way, you can benefit from the synergy effects with Outlook in an optimal way and share project information even more easily.



BUDGETING

Improved budgeting

InLoox PM 7 makes project budgeting and accounting even more transparent: Manage costs for planned resources with the new planned costs list. Invoice such resource costs with one click, too. Decide whether you want to include all budget positions or only selected positions into your project billing.

New Features of Version 7

InLoox PM is a Software of

InLoox GmbH | Kantstr. 2 | D-80807 Munich

Telephone: +49 (0)89 358 99 88 0 | Fax: +49 (0)89 358 99 88 99

E-mail: info@inloox.com | www.inloox.com

All specified product names, product designations and logos in this document are registered trade marks and property of the respective right owners.