



# **Project management – integrated into Outlook**

InLoox 6.x configuration guide for Oracle Server

An InLoox Whitepaper

Published: March 2011

Copyright: © InLoox GmbH

You can find up-to-date information at <http://www.inloox.com>

The information contained in this document represents the current view of InLoox on the issues discussed as of the date of publication. Because InLoox must respond to changing market conditions, it should not be interpreted to be a commitment on the part of InLoox, and InLoox cannot guarantee the accuracy of any information presented after the date of publication.

This White Paper is for informational purposes only. INLOOX MAKES NO WARRANTIES, EXPRESS, IMPLIED OR STATUTORY, AS TO THE INFORMATION IN THIS DOCUMENT.

Complying with all applicable copyright laws is the responsibility of the user. Without limiting the rights under copyright, no part of this document may be reproduced, stored in or introduced into a retrieval system, or transmitted in any form or by any means (electronic, mechanical, photocopying, recording, or otherwise), or for any purpose, without the express written permission of InLoox GmbH.

© 2010 InLoox GmbH. All rights reserved.

IQ medialab and InLoox are either registered trademarks or trademarks of InLoox GmbH in Germany and/or other countries.

The names of actual companies and products mentioned herein may be the trademarks of their respective owners.

## Contents

General information .....	1
SQL server Installation .....	1
Obtaining an ORACLE SQL Server .....	1
Initial installation of ORACLE SQL Server on a Windows Server .....	1
Alternative 1: Creation of a schema / a user on an existing database .....	2
Alternative 2: Create a data base for InLoox .....	5
Examine the installation .....	10
Opening ports .....	12
Ways to connect to the InLoox database.....	12

## General information

This document describes the steps to configure and start-up an ORACLE SQL Server (express/standard/Enterprise) with InLoox. Moreover a suitable system configuration to use InLoox is described. For the example a Windows server 2003 is used as platform. This configuration guide is also valid for Windows of 2000 servers.

## SQL server Installation

### Obtaining an ORACLE SQL Server

1. If you do not have an ORACLE Server license as well as an appropriate installation medium, **ORACLE Express Server** is available under the following address free of charge:

<http://www.oracle.com/technology/products/database/xe/index.html>

Important: Please note that the off-line replication is not possible with ORACLE. If you like to use the InLoox offline availability, a **Workgroup, Standard or Enterprise Edition** of Microsoft SQL Server is necessary. You can find a feature overview of the SQL server versions under:

<http://www.microsoft.com/germany/sql/editionen/default.mspx>

### Initial installation of ORACLE SQL Server on a Windows Server

1. ORACLE offers extensive documentation initial considerations before installation and installation guides in the appropriate download regions on their homepage.
2. Please note that for using InLoox another character set than the standard is necessary on installation.



Data base character set: AL32UTF8

Country-specific character set: AL16UTF16

## Alternative 1: Creation of a schema / a user on an existing database

On an existing database you can create a new schema and assign a separate Tablespace.

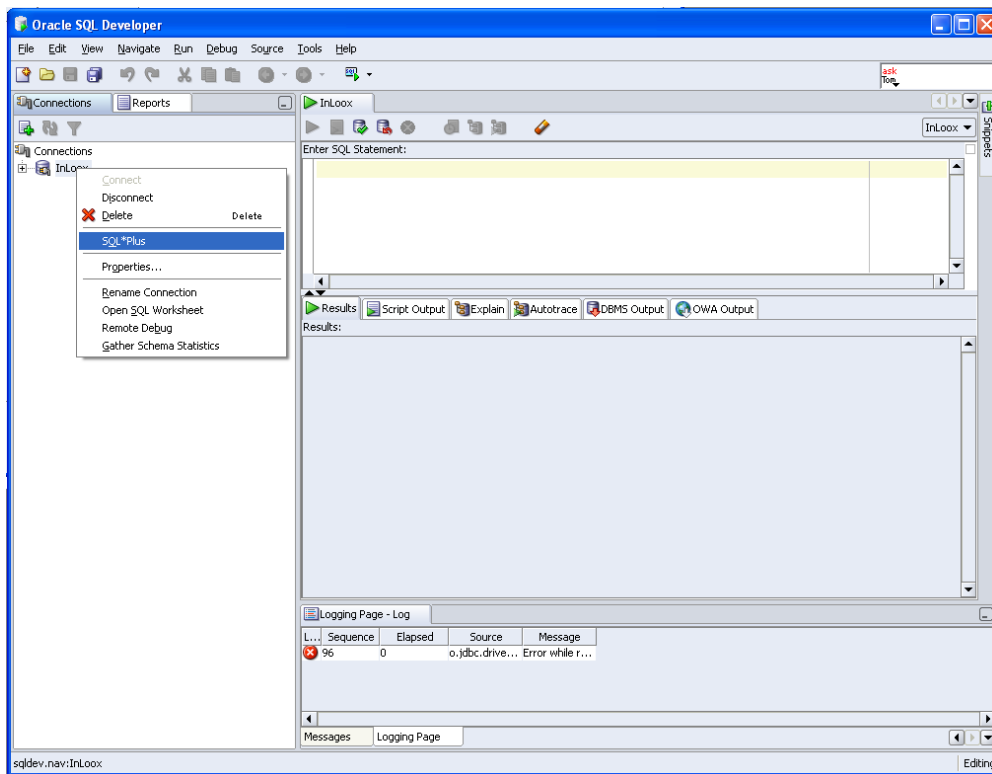
Requirement:



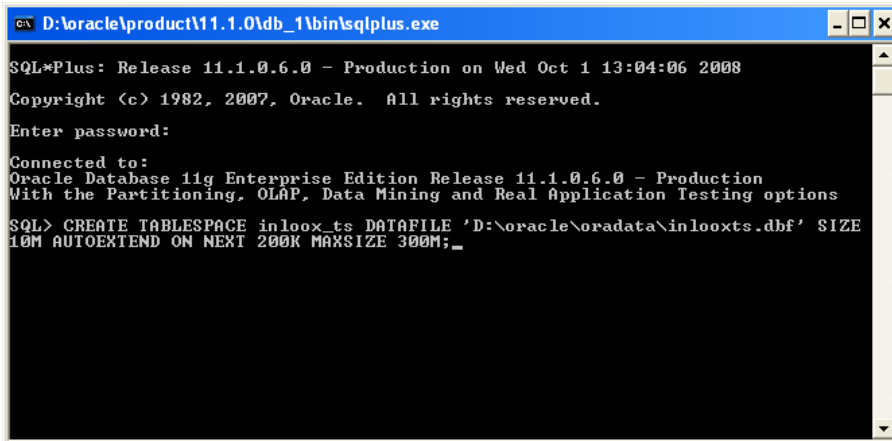
The containing data base has to use the character set: AL32UTF8

Proceed as follows:

1. Connect to the database with SQLPlus (e.g. from SQLDeveloper)



2. Create a Tablespace. The example shows the creation of a Tablespace, which has an initial size of 10 megabyte and can increase up to 300 megabyte in 200K steps.



```

C:\> D:\oracle\product\11.1.0\db_1\bin\sqlplus.exe

SQL*Plus: Release 11.1.0.6.0 - Production on Wed Oct 1 13:04:06 2008
Copyright (c) 1982, 2007, Oracle. All rights reserved.

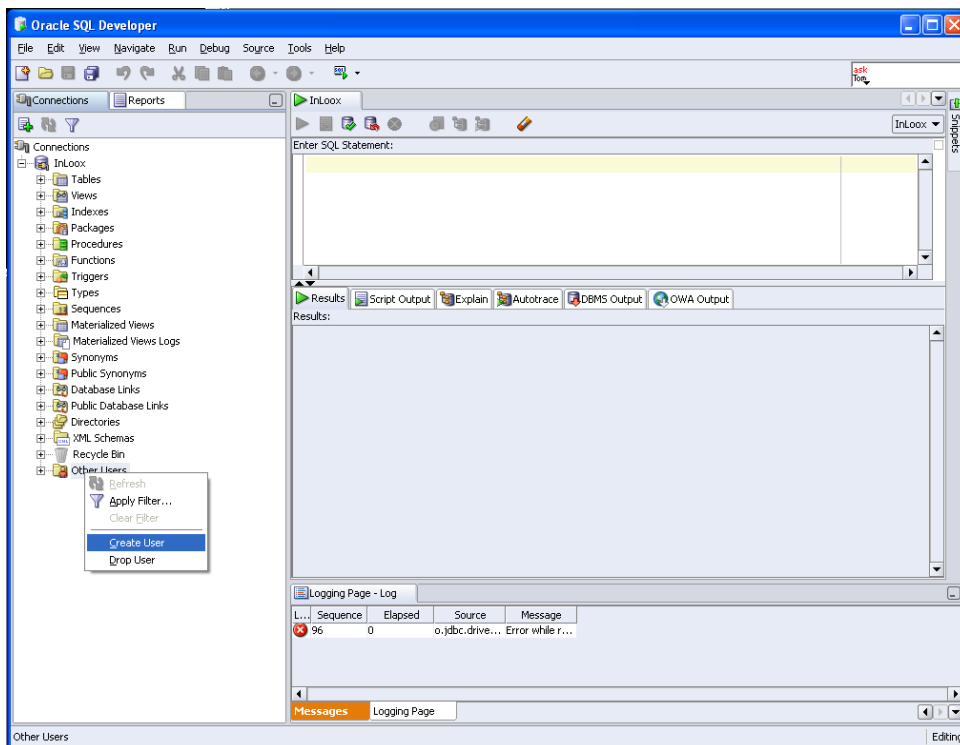
Enter password:

Connected to:
Oracle Database 11g Enterprise Edition Release 11.1.0.6.0 - Production
With the Partitioning, OLAP, Data Mining and Real Application Testing options

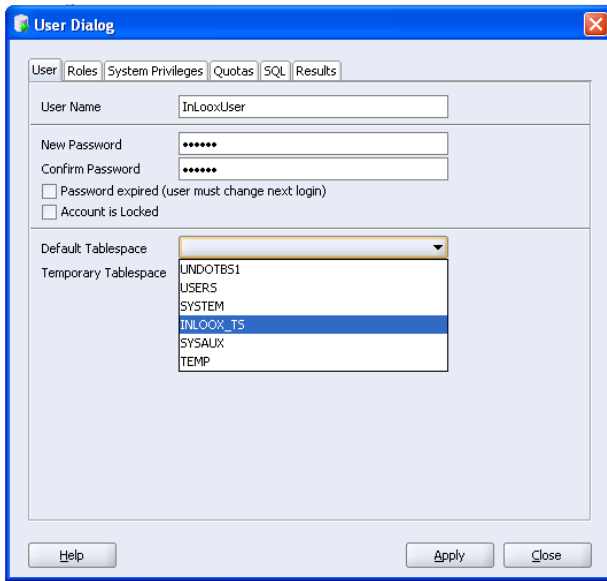
SQL> CREATE TABLESPACE inloox_ts DATAFILE 'D:\oracle\oradata\inlooxts.dbf' SIZE
10M AUTOEXTEND ON NEXT 200K MAXSIZE 300M;_
    
```

`CREATE TABLESPACE inloox_ts DATAFILE 'c:\oracle\oradata\ora\inlooxts.dbf' SIZE 10M AUTOEXTEND ON NEXT 200K MAXSIZE 300M;`

3. Create a new user



4. Assign the created Tablespace to the user

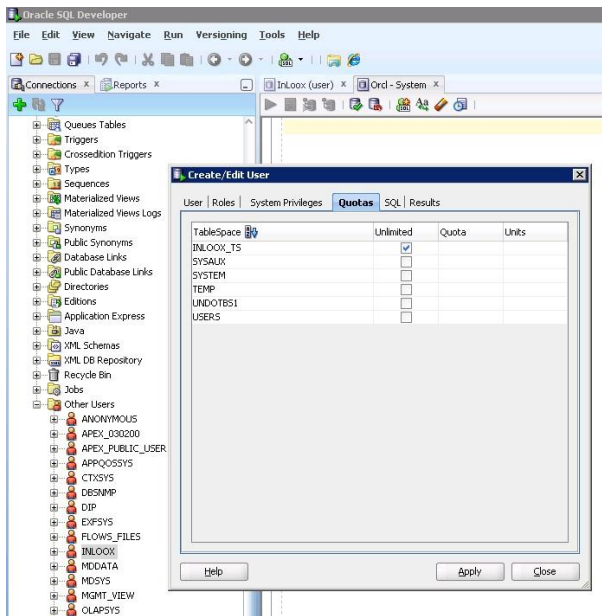


5. Set the permissions

- Create, update and delete of tables (creation of columns is necessary)
- Insert, update and delete from data records

The needed permissions are - Create Session, Create Table, Create Type

6. Set the quota for the tablespace to unlimited



The

database user name can be arbitrary.

At the installation you need:

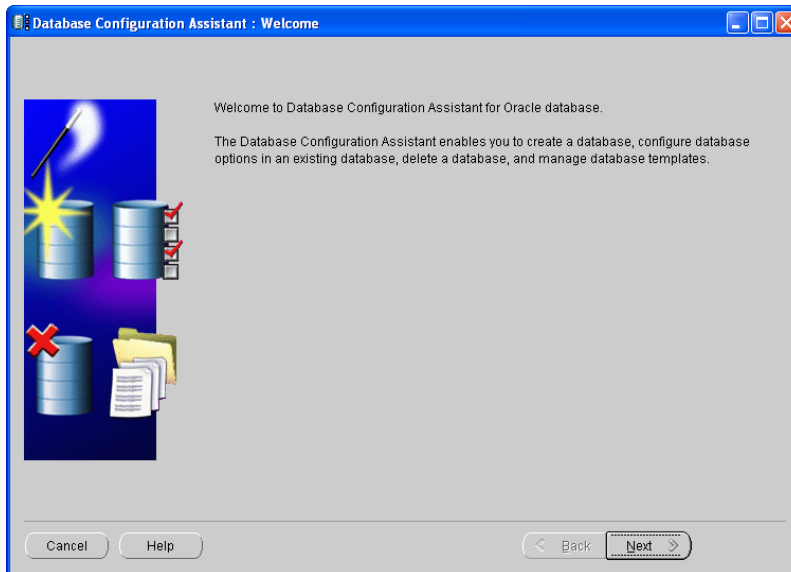
- Server name
- SID
- User name
- Password

## Alternative 2: Create a data base for InLoox

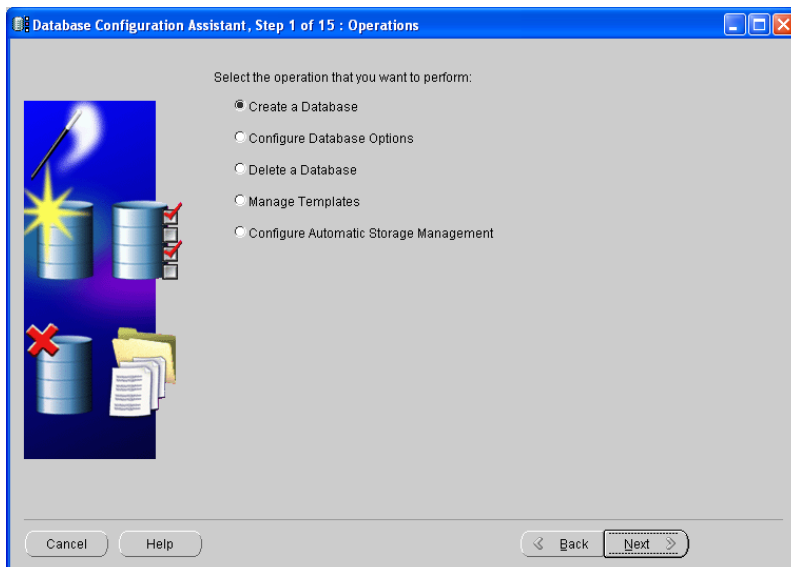
Note that ORACLE Express Edition allows only one database or database instance. Thus the description for creating a new instance is only valid for the Standard and Enterprise version.

To create a new instance, proceed as follows:

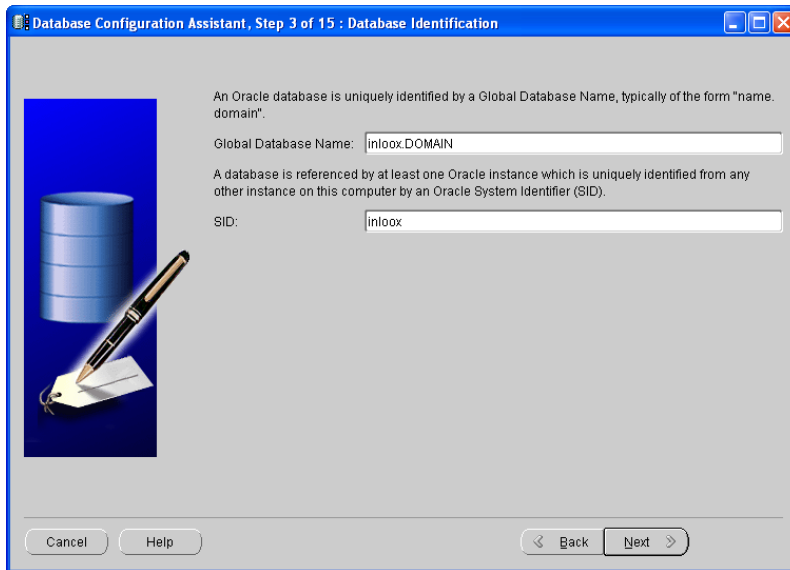
1. Click on: **Start - > All programs - > Oracle - > Configuration and migration tools „Database Configuration Assistant “**



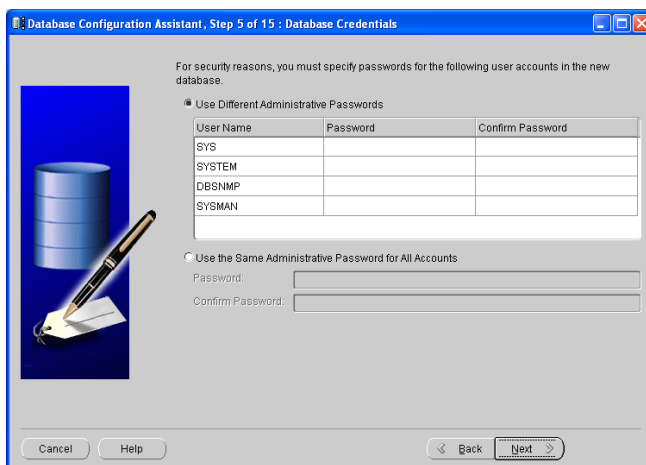
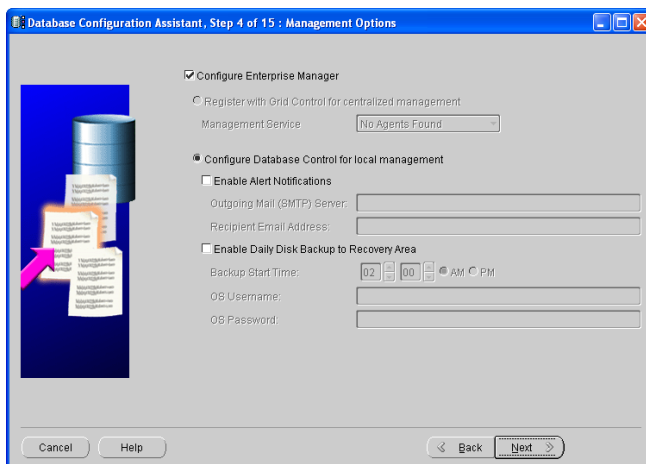
2. Select **Create a Database.**

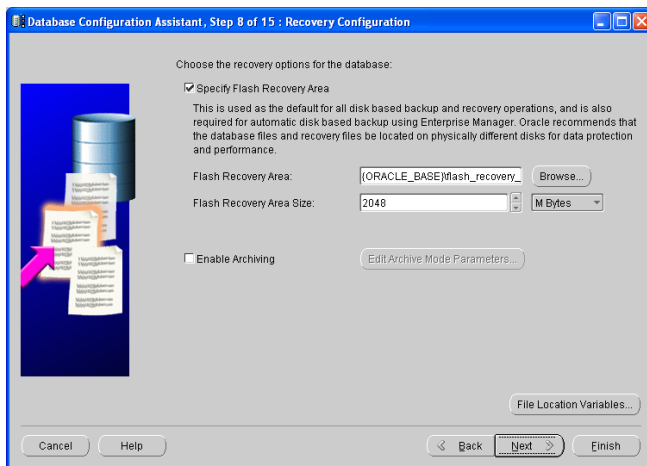
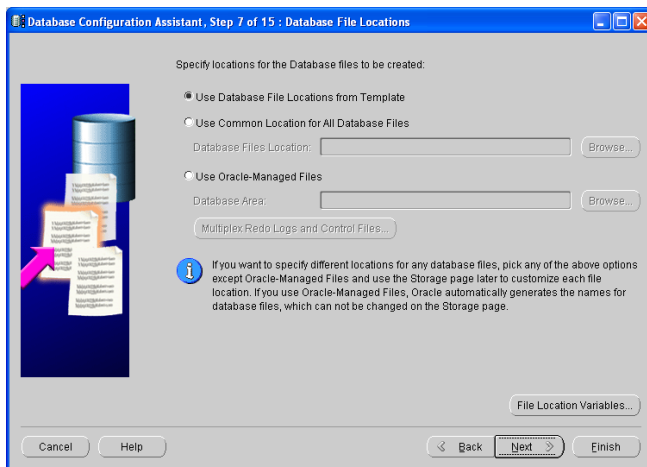
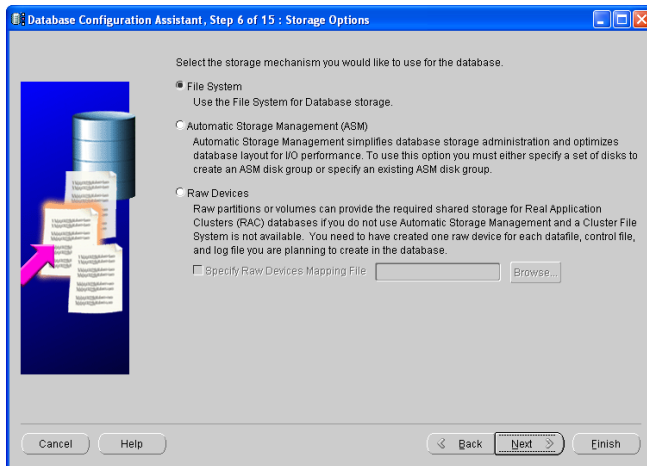


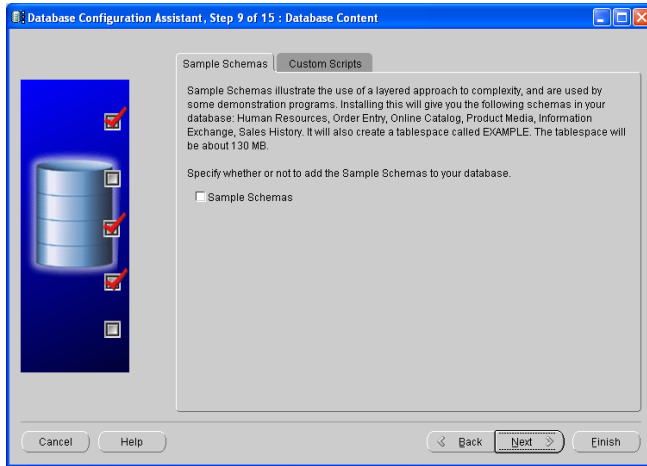
3. Select a name for the database (normally NameOfDB.YourDomain), as well as the names for the instance. The instance name is normally the first part of the global database name.



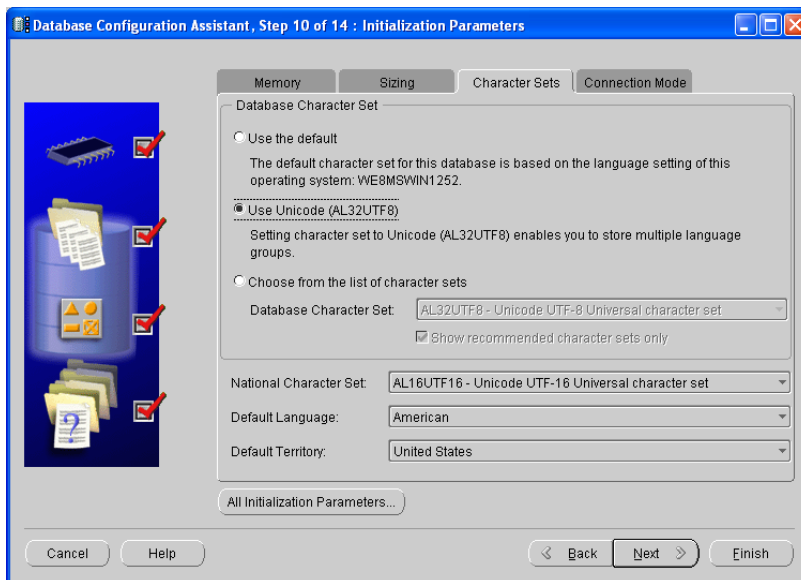
4. Configure the steps 4-9 according to your requirements. Illustrated as example by following Screenshots.



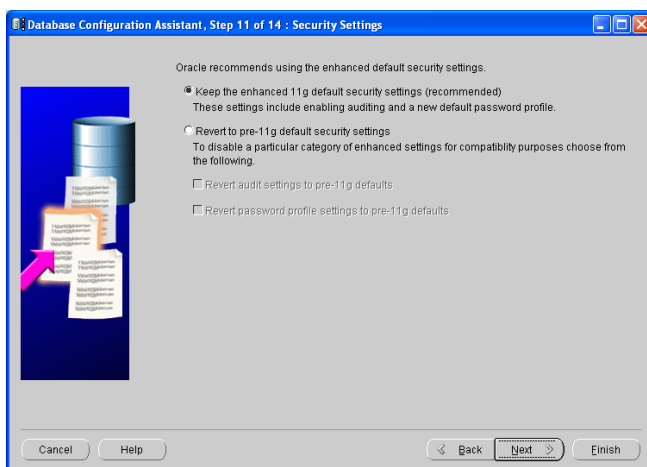


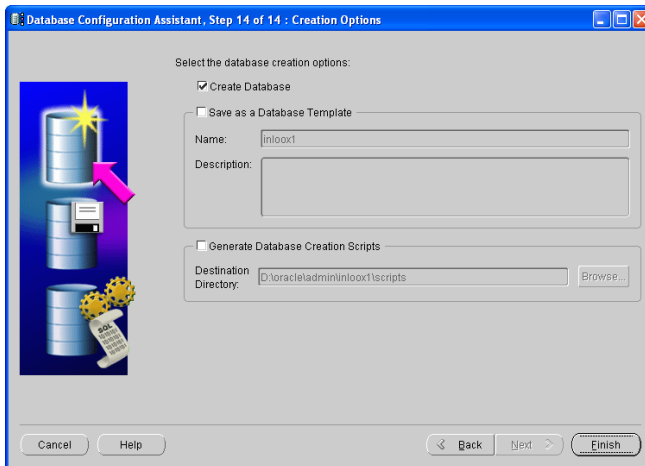
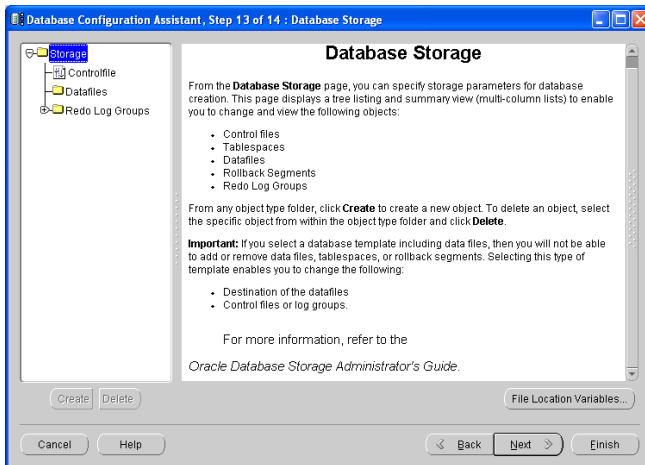
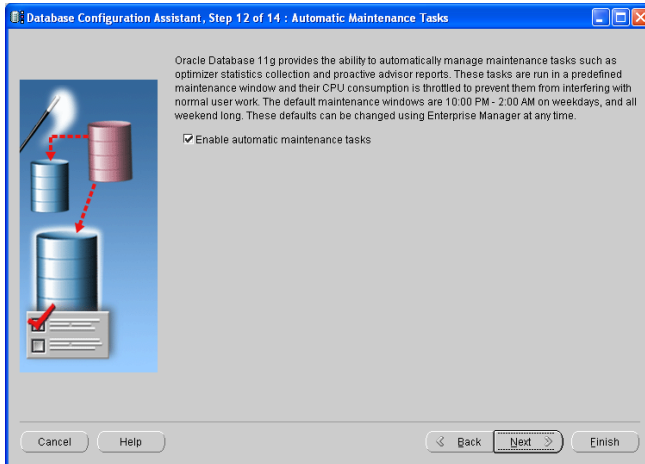


- At step 10 you have to change the settings for the character set, since InLook uses **Unicode!**



- Configure the steps 11-14 according to your requirements. Illustrated as example by following Screenshots.





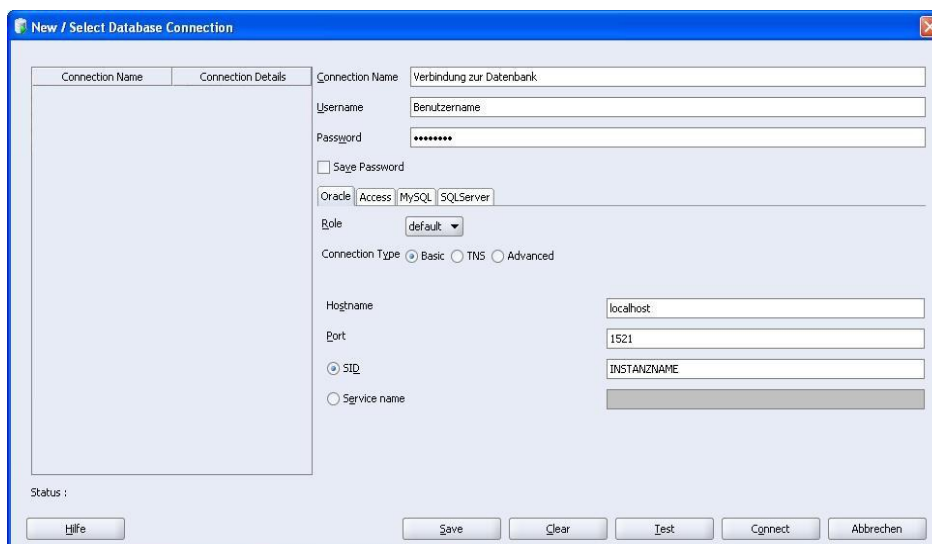
## Examine the installation

Check if Oracle SQL Server service is running after installation:

1. Double click in the “System Control” on “Administration”
2. Double click on „Services“
3. Here you should find the following 3 services (when using an instance) with status “Started“:
  - OracleJobSchedulerINSTANCENAME
  - OracleServiceINSTANCENAME
  - OracleOraDbVERSION\_home1TNSListener

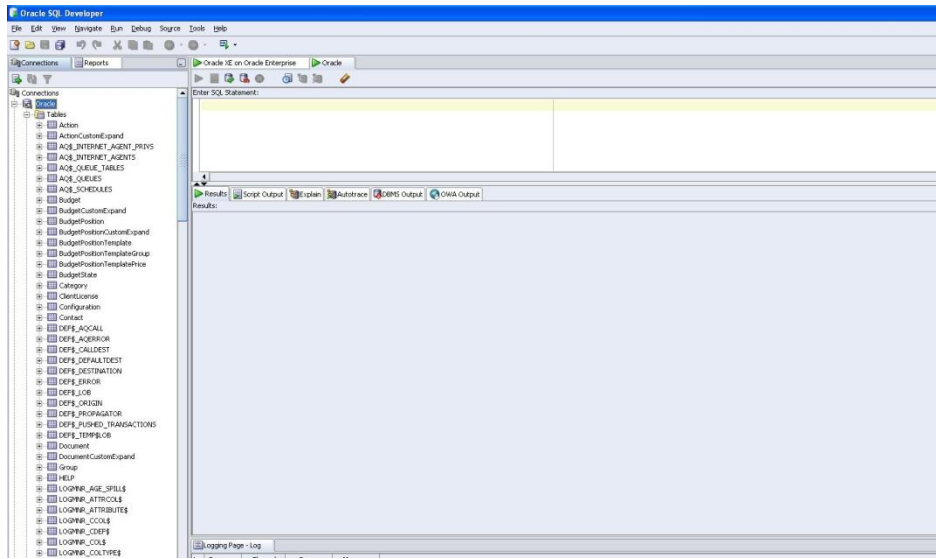
INSTANCENAME = the name you assigned for the ORACLE instance

VERSION = version of the installed ORACLE of product e.g. 11g



1. Try to connect using SQL Developer

2. Click on Tables to see a list of present tables



## Opening ports

**Please note**, that opening ports can lead to a **safety risk** in your network. Examine the necessary safety precautions in advance, before opening any ports!

1. Make sure that the ports of the database server are not *blocked*. Examine the firewall settings of the **server** as well as of the **network hardware**.

The standard port of ORACLE SQL Server is: **1521**

## Ways to connect to the InLoox database

There are two possibilities for a connection between an InLoox client and the database.

1. Oracle (direct) - standard
2. Oracle (client)

### Fundamentals

In the guide above the following Oracle configuration was used for InLoox:

Global database name: InLoox.Domain

SID: InLoox

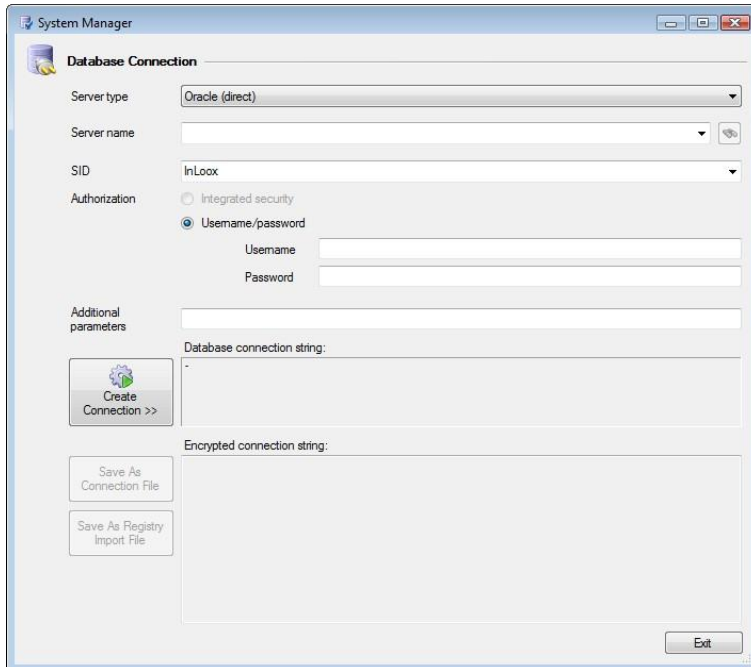
Thus the file „tnsnames.ora“ (to find in the file <ORACLE\_HOME>/network/admin) was created with the following entries:

```
INLOOX =  
(DESCRIPTION =  
(ADDRESS = (PROTOCOL = TCP)(HOST = Server.Domain)(PORT = 1521))  
(CONNECT_DATA =  
(SERVER = DEDICATED)  
(SERVICE_NAME = inloox.domain)  
)  
)
```

## Oracle (direct)

The Direct mode is the standard setting of InLoox. All necessary files and settings are installed by InLoox. Furthermore only the SID of the Oracle instance is needed.

The connection key can be generated with the tool “System Manager” or directly with the Setup.



## Oracle (client)

For this way of connection the Oracle-Client has to be installed on the computers, where InLoox should be executed.

In contrast to the Direct-Mode the name of the service is needed here (InLoox.Domain).

This connection key can only be generated with the “System Manager” tool.

