



InLoox PM 7 Web App –  
The Online Project Software

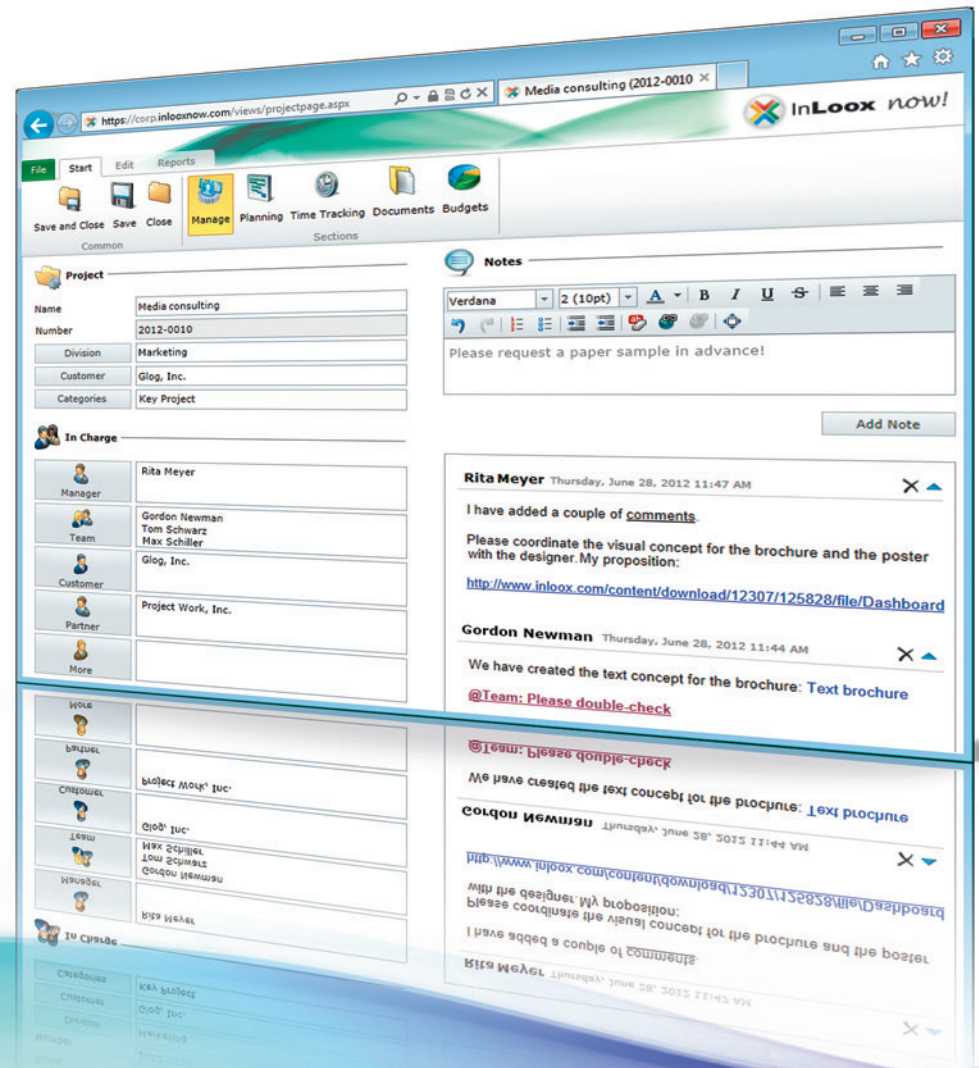
## New Features in Version 7

### InLoox PM 7 Web App

Takes Online Project Management to the Next Level

Online project management has never been this intuitive and easy-to-use. InLoox PM 7 Web App offers you a secure, virtual project room on the Internet with sophisticated features for teams of any size.

InLoox PM 7 Web App makes your projects mobile and available worldwide, either in combination with InLoox PM for Microsoft Outlook or completely independent of it – it's up to you.



Test the latest product generation for 30 days, with no restriction,  
free-of-charge and with no obligation:  
[www.inloox.com/try-it](http://www.inloox.com/try-it)



InLoox PM 7 Web App –  
The Online Project Software

New Features in Version 7

## Major features at a glance

Enhance your everyday project work with a modern, sophisticated online platform that makes project management on the Web as intuitive, flexible and efficient as never before.

## Flexibility & Ease of Use

### User interface

Stay focused with the new ribbon-based user interface. Functions and commands are exactly where you need them to complete a task quickly and efficiently.



### Autonomous of InLoox PM for Outlook



InLoox PM Web App can be used completely independent of Microsoft Outlook – e.g. on a smartphone, a tablet computer, an Apple Mac or Linux. It can, however, be combined with InLoox PM for Outlook, if you prefer. The central project database synchronizes all data automatically.

### Available as purchase or leasing model

Name\*: Rita Meyer

Company: InLoox

E-Mail\*: meyer@inloox.com

Password\*: .....

Desired address\*: inloox.inlooxnow.com  
Datacenter United States [change](#)

☒ I accept the [terms and conditions](#)


Create free account

In addition to the classic licensing model, InLoox PM Web App is also available as a comprehensive turnkey service. Start your own online project platform in just a few minutes. All you need is an Internet browser – and you are ready to go.

## Planning

### Lags

Use lags and lead time between planning elements in your schedule. Easily create time overlaps of planning elements as well as lead and waiting times. This allows you to plan your projects even more realistically.

		Final tests	2012/6/12...	2012/6/14...	2 Day(s)...	
		Beta version	2012/6/11...	2012/6/13...	1 Day(s)...	

### Backward scheduling

Planning scheduling

Planning direction

Forward scheduling

Planning start

11/1/2012

08:00

With forward scheduling, you plan your activities from start to end. (default)

Backward scheduling

Planning end

12/5/2013

07:00

With backward scheduling, you start at the end of a plan and insert the predecessor activities.

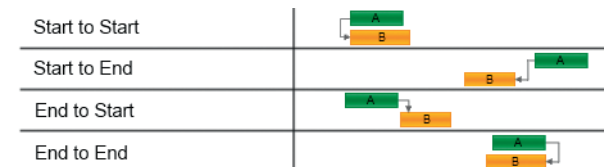
OK

Cancel

The choice is up to you:  
Develop your project plan from your current starting point or based on the desired deadline.

### Dependencies

Define logical dependencies between planning elements and use the link methods from network planning. InLoox PM Web App then calculates your optimal project plan.



### Skill management

Browse the skills of your team members in InLoox PM Web App, making it quick and easy to find the right employees, ensuring you have the right people in the right place in your project.

Skills

New

Edit

Delete

Name	Description
International experience	Professional stay of at least half a year...
Trade fair experience	Management of a stand at a trade fair...
Senior project manager	Experience as a project director in...

Skill Assignment

New

Edit

Delete

Resource	Skills
Tom Schwarz	Senior project manager, Trade fair experience...
Gordon Newman	English language skills, International Experience...
Rita Meyer	French language skills, International Experience...



## Planning

### Undo and redo



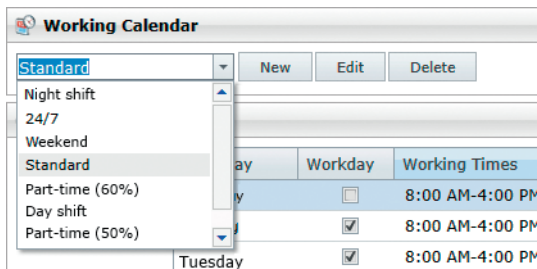
InLoox PM 7 Web App enables you to undo changes and to redo actions that you undid. This allows you to go a step back and correct errors.

### Edit in-line

Changing your project plan will become even easier with InLoox PM 7 Web App. Now, it is no longer necessary to open planning elements to edit them. You can modify them directly in-line.

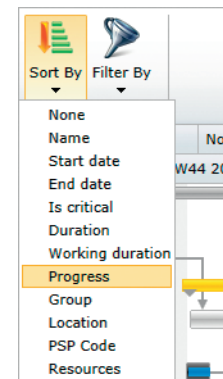
Financing	2012/11/12	2012/11/19	7 Days	
Credits	2012/11/12	2012/11/16	critical 4 Days	
Sponsors	2012/11/15	2012/11/19	4 Days	
Implementation	2012/11/14	2012/11/14	critical 1 Day	
Correction phase	2012/11/14	2012/11/15	critical 1 Day	

### Individual working time calendars



InLoox PM Web App adjusts intelligently to the working times in your company. Whether part-time, shift or weekend work – integrate individual working time models into InLoox PM Web App.

### Filtering and sorting

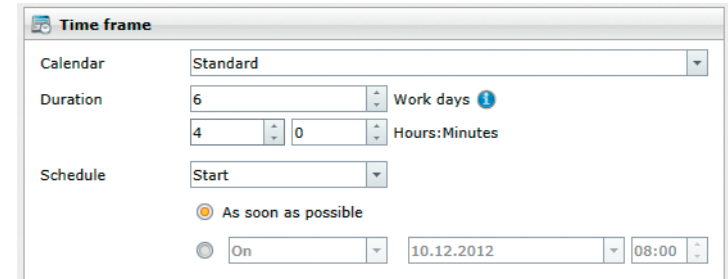


Filter and sort your project plan however you please. Focus on details that are important for you and keep track, even of large project plans.

## Planning

### Constraints

Set time constraints for activities and milestones in your project plan – e.g. “Start on”, “Finish on”, “As soon as possible”, “As late as possible”, “No later than”, “No earlier than”. InLoox PM 7 Web App then assumes the task of time planning. Integrate all your time requirements into InLoox PM Web App with the result of a consistent project plan.



**Time frame**

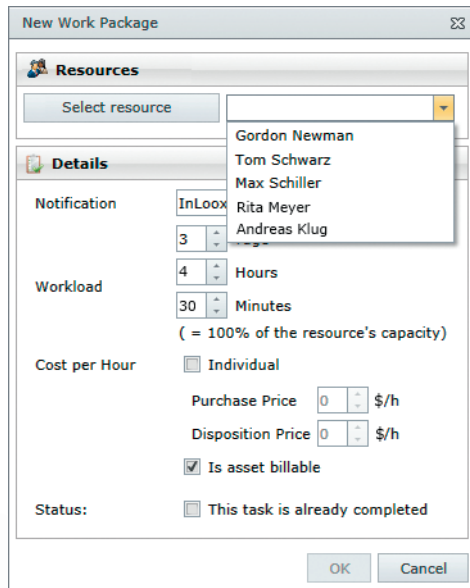
Calendar: Standard

Duration: 6 Work days ⓘ  
4 Hours:Minutes 0

Schedule: Start

☒ As soon as possible  
☐ On 10.12.2012 08:00

### Quick selection of resources



**New Work Package**

**Resources**

Select resource: Gordon Newman, Tom Schwarz, Max Schiller, Rita Meyer, Andreas Klug

**Details**

Notification: InLoox 3

Workload: 4 Hours 30 Minutes  
( = 100% of the resource's capacity)

Cost per Hour: ☐ Individual  
Purchase Price: 0 \$/h  
Disposition Price: 0 \$/h  
☒ Is asset billable

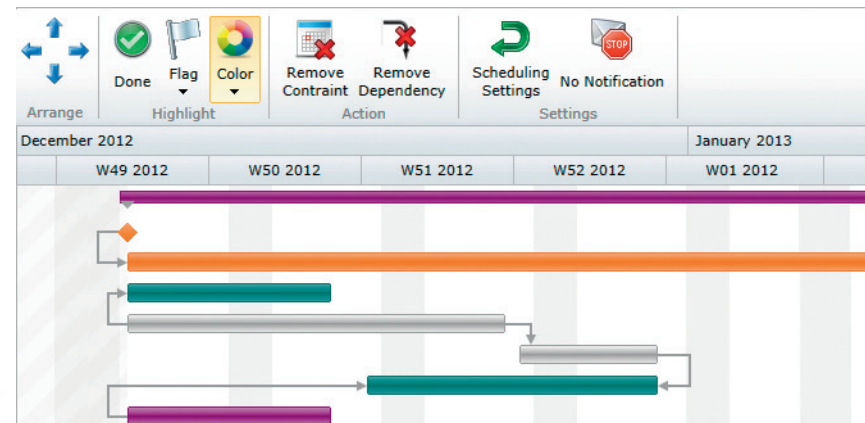
Status: ☐ This task is already completed

OK Cancel

Find the required project resources even faster. The new quick selection of resources means that you don't have to search large address books – InLoox PM 7 Web App offers you a compact pre-selection of regularly used project resources.

### Individual color settings

Keep an eye on relevant details in your project plan. Highlight specific elements from a color palette, to indicate responsibilities or priorities, for example.

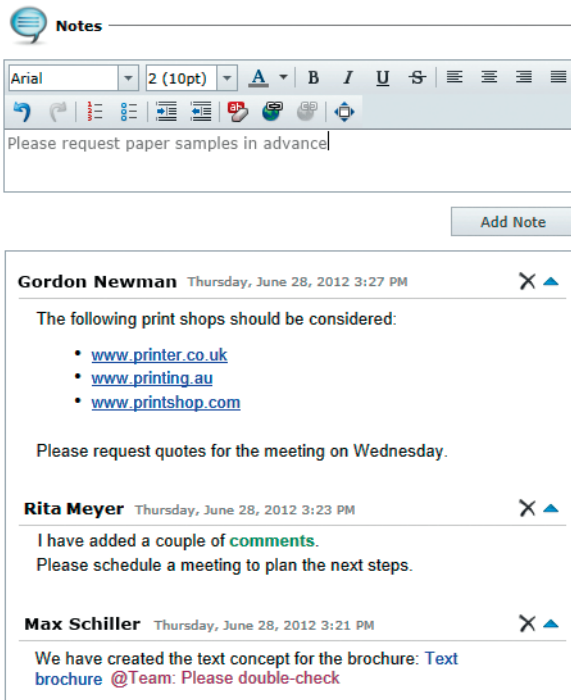




## Communicating

### Project comments

Easily exchange project notes with other team members as formatted text or hyperlinks. The comment history allows you to trace the flow of information throughout the life of the project.



**Notes**

Please request paper samples in advance

**Add Note**

**Gordon Newman** Thursday, June 28, 2012 3:27 PM

The following print shops should be considered:

- [www.printer.co.uk](http://www.printer.co.uk)
- [www.printing.au](http://www.printing.au)
- [www.printshop.com](http://www.printshop.com)

Please request quotes for the meeting on Wednesday.

**Rita Meyer** Thursday, June 28, 2012 3:23 PM

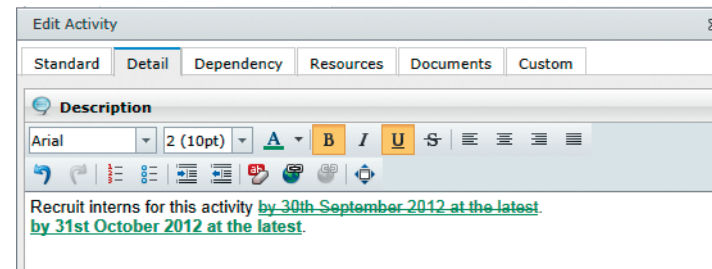
I have added a couple of **comments**.  
Please schedule a meeting to plan the next steps.

**Max Schiller** Thursday, June 28, 2012 3:21 PM

We have created the text concept for the brochure: **Text brochure** @Team: Please double-check

### Formatted text

InLoox PM 7 Web App makes the exchange of information with your team fast and easy. Use formatted text, hyperlinks and colors to convey additional information to your team members about activities, time tracking entries, budgets and documents.



**Edit Activity**

Standard Detail Dependency Resources Documents Custom

**Description**

Recruit interns for this activity by 30th September 2012 at the latest  
by 31st October 2012 at the latest.

## Documenting

### One-stop document management

The InLoox PM Web App document view now offers an up-to-date overview of all project documents and all document links. Instantly navigate from the document view to the linked planning activity or time tracking element. Conversely, documents attached to elements can be opened with a single click.

Drag a column header here to group by that column

Filename	Size	Created	Objects	Changed	Linked Objects
Ad material analysis.xlsx					
Request sponsorship options.msg					
Conditions for references and case studies.msg					
Credit comparison.xlsx					
Credit conditions.xlsx					
Price list.xlsx					
Board meeting protocol.docx					
Redesign Website.pptx					
Sponsor Presentation.pptx					
Agenda Kick-off meeting.docx					

www.inloox.com

**Edit Document**

Standard Links Custom Fields

**Documents**

Add Download Delete

Type	Type Identifier	Name/Description
Planning Activity		Competitor analysis
Planning Activity		Product launch
Action		Telephone conference
Action		Benchmark document

OK Cancel

### Document folder view

Organize your documents in the same way that you're accustomed to - in folder structures. InLoox PM Web App now supports a visual folder view and creates project folders according to centrally configured rules. Pre-defined subfolders can be automatically created, providing a clear and consistent structure for all users.

Save and Close Save Close Manage Planning Time Tracking Documents Budgets

Common Sections

All documents

Project folder

- Price lists
- Protocols
- Communication
  - Presentations

Filename	Size	Created
Ad material analysis.xlsx	9 KB	6/15/2012
Request sponsorship options.msg	35 KB	6/15/2012
Conditions for references and case studies.docx	35 KB	6/15/2012
Customer presentation.pptx	9 KB	6/15/2012



InLoox PM 7 Web App –  
The Online Project Software

New Features in Version 7

## InLoox PM 7 Web App

### Takes Online Project Management to the Next Level

More than 2,000 clients and 30,000 users in over 40 countries on five continents rely on InLoox PM. Corporate customers ranging from small and mid-sized companies to large enterprises use it as their standard software. More and more companies of all sizes and market sectors are finding InLoox PM to be their efficient solution for project management.

Some companies, that use InLoox PM:

**SIEMENS**



**AVIS**

**PENTAX**

 **U·S AIRWAYS**

All specified product names, product designations and logos in this document are registered trademarks and property of the respective right owners.



Presented by:



**InLoox, Inc.** | One Embarcadero Center, Suite 1060  
San Francisco, CA 94111 | USA